

## **Education Impact Assessment**

### **New Housing Developments:**

### **Fellow Lands Way and Snelsmoor Grange**

#### **1.0 Context**

- 1.1 The Council closely monitors pupil numbers and trends. City-wide primary pupil numbers in Derby increased significantly over previous years. In 2009/10, there were around 19,500 primary pupils on roll in Derby schools. By 2019/20, this had increased to around 23,700, an increase of 4,200 pupils (22%), over a ten-year period.
- 1.2 This level of increase in primary pupil numbers required very careful consideration and planning, with 18 primary school expansions implemented to accommodate the growth.
- 1.3 Derby has, generally, followed the national trend in relation to changes in its pupil population. Many LAs faced challenges in accommodating the scale and pace of growth in primary pupil numbers during this period. Derby was able to continue to meet its legal duty in respect of school places as a result of close partnership working with Schools and Academy Trusts to create the additional capacity required.
- 1.4 Following this period of high growth, City-wide pupil numbers moving into reception are now beginning to gradually decline. With regard to those areas where further increases in primary pupil numbers are projected, this is, in almost all cases, as a direct result of new housing developments.
- 1.5 Primary pupil numbers will continue to be closely monitored and reviewed to identify any specific areas of pressure in the City and in view of the changing trend.



## 2.0 Fellow Lands Way and Snelsmoor Grange: New Housing Developments

- 2.1 The Fellow Lands Way and Snelsmoor Grange housing developments are both currently located within the catchment areas of Oakwood Infant & Nursery School and Oakwood Junior School. The catchment area schools are almost full, with limited surplus capacity.
- 2.2 The table below sets out current pupil numbers on roll at the catchment area schools, based on October 2021 School Census data.

Table1: Pupil numbers on roll at the current primary phase catchment area schools – October 2021 School Census data

School	NOR October 2021	Net Capacity October 2021	No. of Surplus Places	% Surplus Capacity
Oakwood Infant & Nursery School	260	266	6	2%
Oakwood Junior School	348	360	12	3%
	608	626	18	3%

- 2.3 The table below sets out estimated pupil numbers arising from the new housing developments.

Table 2: Fellow Lands Way and Snelsmoor Grange – Property numbers and est. primary pupil numbers

Development	Property Numbers	Total est. primary pupil numbers	Est. pupil numbers per year group	Notes
<b>Fellow Lands Way</b>	190	53	8	Recently completed
<b>Snelsmoor Grange</b>	800	224	32	Not yet started
<b>Total</b>	<b>990</b>	<b>277</b>	<b>40</b>	



### **3.0 Aims and Objectives**

- 3.1 Sites of over 750 new homes usually require a new primary school on site and this policy is supported by the Council's Planning Obligations Supplementary Planning Document. This approach is consistent with most Local Authorities in the commissioning of new schools to accommodate housing growth.
- 3.2 Derby City Council is seeking to establish a one and a half form of entry primary school (315 places), with a 39-place nursery, to serve this new community in Derby City. The new school will have the effect of providing capacity within a growing area of the City and will provide choice for parents.
- 3.3 In the first year of opening, the school would offer 45 places in the Reception year group only. The school would then increase in size gradually, each academic year, until it reaches a capacity of 315 pupils in September 2029. If additional places are required in other year groups before this date, the structure will be determined by pupil numbers and the school's budget.
- 3.4 The successful sponsor will be asked to confirm that they will work with Derby City Council to ensure that the school grows in a way that supports the new housing development and does not destabilise other local schools.

### **4.0 Local Primary Schools**

- 4.1 Derby City Council has a statutory duty to make provision of places for school aged pupils and must follow the School Admissions Code in making those places available. In planning school places, an assessment is made of existing provision, pupil projections and the potential impact of new housing proposals within the local area.
- 4.2 According to Department for Education (DfE) Guidance 'Securing Developer Contributions for Education – November 2019', as far as possible (and often in relation to primary schools only), new settlements and urban extensions should be expected to meet their full education requirement. Where an onsite school is required, it should be large enough to meet the need generated by the development.
- 4.3 As a general rule, the capacity of existing primary schools beyond the statutory walking distance does not need to be taken into account when calculating developer contributions for permanent onsite schools in new settlements and urban extensions. This promotes sustainable and healthy travel patterns for young people.



- 4.4 A map showing the boundary of the Snelsmoor Grange and Fellow Lands Way developments, together with local primary school catchment areas, is attached as Appendix 1. The table below sets out the current surplus capacity available at the schools, based on October 2021 School Census data:

Local Primary Schools*	NOR October 2021	Capacity October 2021	Number of Surplus Places	Surplus Places %
Alvaston Infant and Nursery School	240	270	30	11%
Alvaston Junior Academy	334	360	26	7%
Chellaston Infant School	308	360	52	14%
Chellaston Junior School	508	512	4	1%
<i>Oakwood Infant &amp; Nursery School (Existing catchment area school)</i>	260	266	6	2%
<i>Oakwood Junior School (Existing catchment area school)</i>	348	360	12	3%
Shelton Infant School	192	210	18	9%
Shelton Junior School	279	300	21	7%
<b>Total</b>	<b>2469</b>	<b>2638</b>	<b>169</b>	<b>6%</b>

\*Please note that it is very likely that some of the above schools will be outside of a two-mile walking distance from some of the new properties, depending on their location within the development.

- 4.5 Attached, as Appendix 2, are tables setting out the following details:

Table 1: Further information on the above schools, including Ofsted ratings and impact judgements.

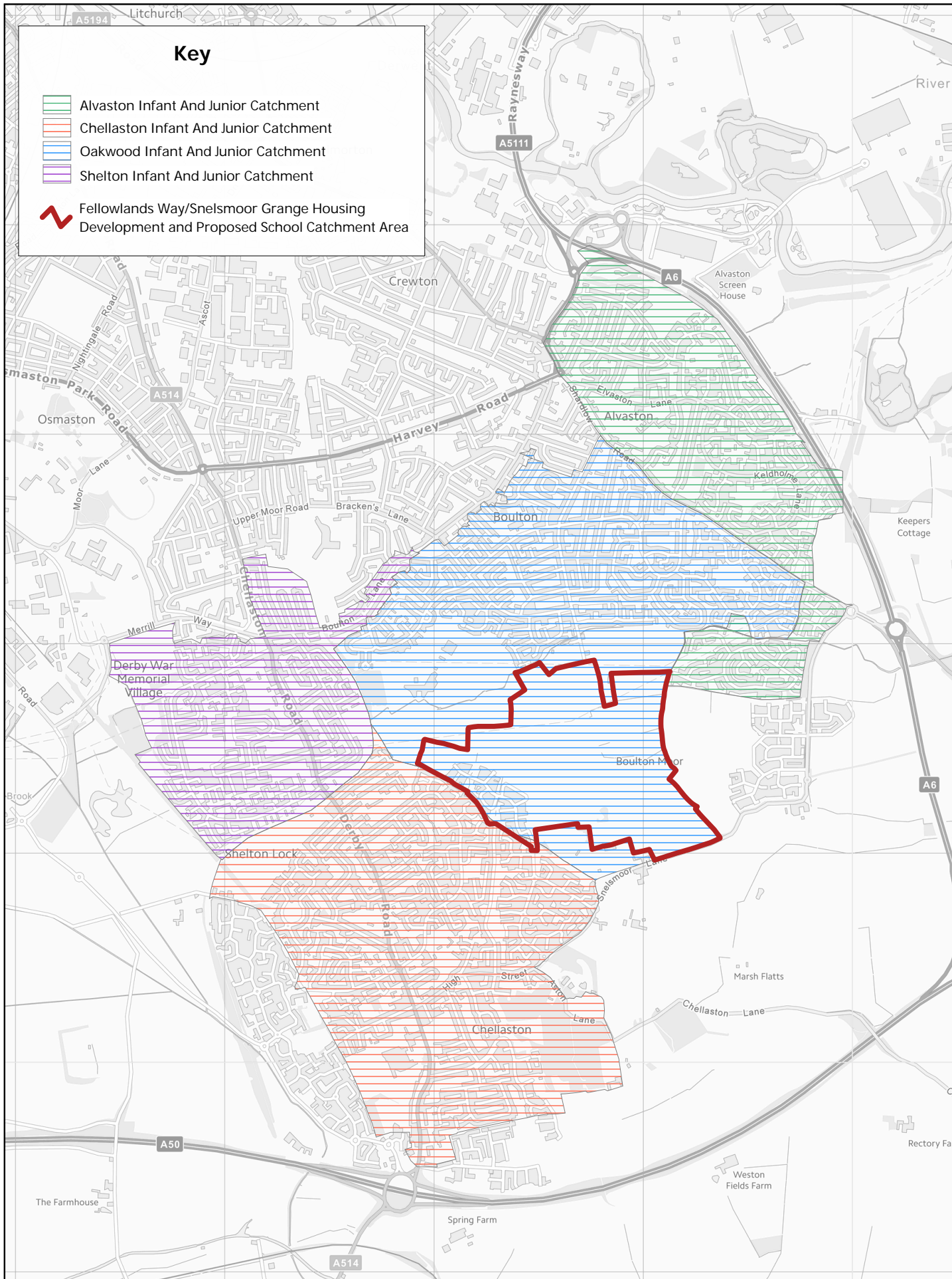
Table 2: Derby's Primary Pupil Projections



## **5.0 Conclusion**

- 5.1 The requirement for the new one and a half form of entry primary school (315 places) has arisen as a direct result of two large-scale new housing developments. It is estimated that the two developments will generate a total of 277 primary school aged pupils and the size of the proposed new school reflects this.
- 5.2 The two developments are currently located within the catchment areas of Oakwood Infant & Nursery School and Oakwood Junior School, as a temporary solution until the new school is built.
- 5.3 In determining the timing of opening the new school, consideration has been given to surplus capacity in other local schools. The Fellow Lands Way development has recently been completed, utilising some of the existing surplus places in the area, and the proposal is to allow 150 occupations (est. 42 primary pupils) on the Snelsmoor Grange site, prior to the new school opening.
- 5.4 The new primary school will ensure that there is sufficient capacity to accommodate families moving to the new housing, with limited surplus capacity across local schools and pupil numbers projected to fall gradually over future years. In addition, a new primary school on site will help to promote sustainable and healthy travel patterns for young people.





**Appendix 4.1 School catchment areas with Boulton Moor housing development**

Drawing No:  
Date: 12/05/2021  
Map Scale: 1:24999

Contact:  
Department:

Telephone Number: (01332) 640666



© Crown Copyright and Database Rights Ordnance Survey 2021.

Licence Number: 100024913

Appendix 4.2

## Snelsmoor Grange and Fellow Lands Way developments: Local Primary Schools

**Table 1:** Information on local existing primary schools, including the current capacities, numbers on roll, Ofsted ratings and impact judgements.

**Table 2:** Derby's Primary Pupil Projections

**Table 1: Current Local Primary School Details**

School Name*	Number on roll October 2021	Net Capacity October 2021	Number of Surplus Places based on capacity	Ofsted rating – overall effectiveness (inspection date)	Impact rating (high, moderate, minimal)
Alvaston Infant and Nursery School	240	270	30	Good (October 2017)	<b>Minimal</b> The school has some surplus capacity. The school has an Ofsted rating of 'Good' and is likely to remain popular with parents.
Alvaston Junior Academy	334	360	26	Good (March 2016)	<b>Minimal</b> The school has a small level of surplus capacity. The school has an Ofsted rating of 'Good' and is likely to remain popular with parents.



Chellaston Infant School	308	360	52	Good (February 2018)	<b>Minimal</b> The school has some surplus capacity. The school has an Ofsted rating of 'Good' and is likely to remain popular with parents.
Chellaston Junior School	508	512	4	Good (November 2011)	<b>Minimal</b> The school is almost full. The school has an Ofsted rating of 'Good' and is likely to remain popular with parents.
Oakwood Infant and Nursery School – Existing catchment area school	260	266	6	Good (January 2018)	<b>Minimal</b> The school is almost full. The school has an Ofsted rating of 'Good' and is likely to remain popular with parents.
Oakwood Junior School – Existing catchment area school	348	360	12		<b>Minimal</b> The school is almost full. The school has an Ofsted rating of 'Good' and is likely to remain popular with parents.





				Good (January 2014)	
Shelton Infant School	192	210	18	Outstanding (October 2007)	<b>Minimal</b> The school has a small level of surplus capacity. The school has an Ofsted rating of 'Outstanding' and is likely to remain popular with parents.
Shelton Junior School	279	300	21	Good (November 2016)	<b>Minimal</b> The school has a small level of surplus capacity. The school has an Ofsted rating of 'Good' and is likely to remain popular with parents.
<b>Total</b>	<b>2469</b>	<b>2638</b>	<b>169</b>		

\*Please note that is very likely that some of the above schools will be outside of a two-mile walking distance from some of the new properties, depending on their location within the development.



**Table 2: Derby's Primary Pupil Numbers and Projections**

	Year Group							
	R	1	2	3	4	5	6	Total
<b>2016-17</b>	3467	3357	3398	3394	3360	3215	3049	23240
<b>2017-18</b>	3335	3506	3380	3397	3421	3354	3234	23627
<b>2018-19</b>	3229	3383	3549	3387	3415	3435	3351	23749
<b>2019-20</b>	3224	3262	3379	3508	3428	3431	3427	23659
<b>2020-21</b>	3182	3258	3249	3364	3517	3416	3431	23417
<b>2021-22</b>	3188	3241	3277	3252	3405	3540	3432	23335
<b>2022-23</b>	3035	3250	3265	3280	3295	3430	3559	23114
<b>2023-24</b>	3099	3102	3283	3280	3332	3330	3458	22884
<b>2024-25</b>	3089	3160	3127	3291	3327	3360	3352	22706
<b>2025-26</b>	3137	3146	3182	3134	3335	3354	3378	22666
<b>2026-27</b>	3137	3172	3146	3166	3155	3340	3349	22465

R = Reception



Derby City Council