

Going to  
**Secondary School**  
in Derby City  
2026 - 2027



Derby City Council

# Contents

<a href="#">Glossary</a>	4
<a href="#">Apply Online</a>	5
<a href="#">Term Dates</a>	6
<a href="#">Who is responsible for School Admissions in Derby?</a>	7
<a href="#">Starting Secondary School</a>	8
<a href="#">Changing Secondary School-In Year</a>	11
<a href="#">How places are allocated</a>	13
<a href="#">Appeals</a>	14
<a href="#">Transport</a>	15
<a href="#">Other information</a>	16
<a href="#">Admission policies for secondary schools</a>	19-36
<a href="#">Map of schools in Derby</a>	20-21

**Please Note:** If a child has an Education Health and Care Plan (EHCP), this admissions handbook is not relevant because the admission arrangements for those pupils are different. We can send you a free booklet called 'Which School for my Child?' which explains the special arrangements for these children.

To get a copy, contact the Council on **01332 641414** or email [sendiass@derby.gov.uk](mailto:sendiass@derby.gov.uk)

# Glossary

## Important Information

Local authorities are not able to guarantee the availability of school places at any school, and this is the case even for schools where siblings attend. The Council must allocate school places strictly in line with the Published Admission Arrangements of the school and cannot take individual families' circumstances into account.

**Academies** are all ability schools established by sponsors from business, faith or voluntary groups working in partnership with central Government. Governors are responsible for all admissions.

**Community schools** are managed by the head teacher and governors in partnership with Derby City Council, which arranges admissions to these schools.

**Voluntary aided schools** are jointly supported by the Church Diocesan Boards and Derby City Council. The governors employ all the staff and manage their admissions.

**Foundation schools** are maintained by the local authority, but the governors are responsible for all admissions.

A **University Technical College (UTC)** is a type of secondary school in England that is led by a sponsor university.

**Trust schools** are maintained schools, owned by a trust, where the governors are responsible for all admissions.

**Special schools** are attended by children with an Educational Health Care Plan (EHCP). Special schools provide for pupils whose degree of disability requires a more comprehensive specialist approach than a mainstream school or enhanced resource school can provide. Some experience of mainstream school may be possible. The Council is the admissions authority for all special schools.

**Enhanced resource schools** are mainstream schools with additional resources for children

with Education Health and Care Plans (EHCP) where there is more specialist support and staff. Pupils are not generally taught separately and are included in the mainstream classes.

**The catchment area** is a defined geographical area, which the school serves. If your child lives in the normal area of a school at the time of application and at the closing date and you request a place there, you will have priority over other children when the applications for admissions are considered. If you want to know which catchment area you live in, go to [derby.gov.uk/secondary](http://derby.gov.uk/secondary).

**The curriculum** is the range of learning opportunities provided by the school, including the subjects studied and activities inside and outside the classroom, such as extra-curricular clubs, educational visits and field studies.

We use the word **parent** throughout the booklet. It means anyone who has legal responsibility for, or care of, a child.

**Independent Appeal Panels** are set up to hear any appeals against a refusal to offer a place at a school. The panels are completely independent of the school and the Council. Their decision is binding on everyone.

## Where to go for more information

For general enquiries contact: Derby City Council, People Services, The Council House, Corporation Street, Derby DE1 2FS Tel: **01332 293111** Web: [derby.gov.uk](http://derby.gov.uk). For admission enquiries please contact [admissions@derby.gov.uk](mailto:admissions@derby.gov.uk).

## Church of England Schools in Derby

The Derby Diocesan Board of Education, Church House, Full Street, Derby DE1 3DR Tel: **01332 388650**.

## Catholic Schools in Derby

The Education Service, The Diocesan Centre, Mornington Crescent, Mackworth, Derby DE22 4BD Tel: **01332 293833**.

**Secondary Transfer** means children who are transferring from junior or primary school to a secondary school in the following academic year.

**In year application** is for children who will be transferring from one secondary school to another secondary school, either within the City or from elsewhere.

# How to Apply Online

If your child is due to start Year 7 at a secondary school in September 2026, you will need to apply for a school place. It is quick and easy to apply electronically using our online facility.



**You can scan our QR Code with your smartphone – here's how to do it:**

1. Open the camera App on your smartphone
2. Point your phone at the QR code, as if you were taking a picture of it – make sure you can see all four corners of the code. When correctly scanned, a pop-up banner will appear, saying what the QR code is linked to.
3. Simply click on the link to take you to our online application site

**You can also apply online at [derby.gov.uk/secondary](https://derby.gov.uk/secondary)**

## Advantages of Applying Online

- it is quick and easy to do.
- you will get an email confirmation that your application has been received.
- the system helps you by checking for errors
- there is no risk that your application will get lost in the post.
- the system has security procedures that will prevent anyone seeing information they are not entitled to see.
- available 24 hours a day seven days a week up until the closing date and time of 31 October 2025.
- on National Offer Day – **2 March 2026** – you can log into your account and see which school you have been offered.

**IMPORTANT – please make a note of your username and password. Your username will be your email address.**

For those who are unable to use our online facilities, there are paper forms available, and you can also apply by telephone.

# School Term Dates

## 2025-2026

Term	Dates
Autumn	Thursday 4 September to Friday 24 October Monday 3 November to Friday 19 December
Spring	Monday 5 January to Friday 13 February Monday 24 February to Friday 27 March
Summer	Monday 13 April to Friday 22 May Monday 1 June to Thursday 23 July

## 2026-2027

Term	Dates
Autumn	Friday 4 September 2026 to Friday 23 October Monday 2 November 2026 to Friday 18 December
Spring	Monday 4 January 2027 to Friday 12 February Monday 22 February 2027 to Thursday 25 March
Summer	Monday 12 April 2027 to Friday 28 May Monday 7 June 2027 to Monday 26 July



# Who is responsible for School Admissions in Derby?

There are seven types of secondary school in Derby:

- Academy
- Community
- Voluntary Aided
- Foundation
- Special
- Trust
- UTC (from Year 9).

For all Derby's community and special schools, Derby City Council is the admissions authority and is responsible for deciding the admission arrangements for children at these schools. The head teacher and school governors follow the Council's arrangements.

For voluntary aided, foundation schools, academies, the UTC and trust schools, the school governors/the Trust Board are the admissions authority.

Special schools only admit pupils with Educational Health and Care Plans (EHCP), and the admissions for these schools are covered by separate arrangements.

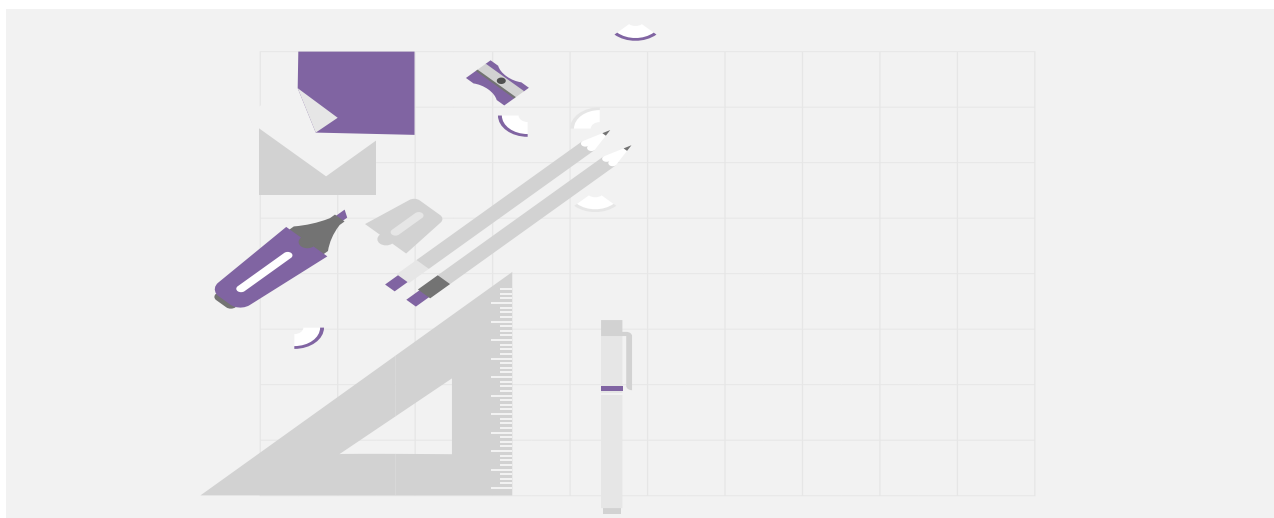
See the free booklet [Choosing A School](#) that explains the special arrangements for these children. To get a copy, contact the Council on **01332 641414** or email [sendiass@derby.gov.uk](mailto:sendiass@derby.gov.uk).

The admissions authority will decide on things such as:

- which area a school should normally serve - this is 'the catchment area' so the school serving the area is called 'the catchment area school'.
- Catchment areas in Derby can be seen by going to [derby.gov.uk/secondary](http://derby.gov.uk/secondary).
- arrangements for parents to say they prefer one school over another - this is known as stating a preference for a 'preferred' school.
- the admissions criteria - the things the authority considers when deciding which children to admit to their school if the applications go over the school's admission limit.
- how parents can appeal against a decision not to offer a place at their preferred school.

## Admission limit

Each school has a limit to the number of pupils it can admit to the first year in the school - this is known as the 'intake year'. We show each school's admission limit at the back of this booklet ([see pages 18-35](#)). This limit is based on the amount of space available in the school and on past admissions.





# Starting Secondary School

## Going from primary to secondary school

The Council operates a coordinated admission scheme. The scheme applies to all maintained schools including Landau Forte College and the UTC, but not independent or special schools.

If you live within Derby City Council's administrative area, you will need to make your application on the Derby City Common Application Form for any school that you wish your child to attend. This includes schools that come under any other council's area, but not independent schools. You must complete your application form by 31 October 2025.

By law, the Council must manage the admissions process on behalf of all schools serving its area and will deal with all applications for school places in Derby.

## Applying for a place?

It is important that you apply for a place at the school or schools you would like your child to attend. You have a legal right to do this as a parent. It is parents' responsibility to establish which is the catchment area school for their address and whether any travel assistance is available before applying for a place at that school. It is also parents' responsibility to know which council's area they live in.

On the Application Form, you can:

- state up to four preferences for any secondary schools.
- show the order of schools that you prefer - the rank order - and give reasons for your preference.

**If you do not request a place at your catchment area school, and none of your four preferred schools are able to offer a place, there is a chance that your catchment area school will also be full. We strongly recommend all parents to include the catchment area school as one of their choices.** You must list your preferred schools in ranked order, including your catchment area school, if that is one of your preferences. It is suggested that you choose more than one school, but you do not have to choose all four,

especially if your catchment area school is included in your choices.

If you wish to apply for a school outside Derby City you will still need to do this on Derby City Council's Common Application Form. The form can be completed electronically at [derby.gov.uk/secondary](https://derby.gov.uk/secondary). You will need to choose the relevant Local Authority in which the School falls in order to be able to see the school. Any paper forms should be returned direct to the Council at Admissions, The Council House, Corporation Street, Derby, DE1 2FS.

**Important note:** You must think very carefully about your preferences and their order, as they can't be changed after the closing date unless you have moved address, which changes your catchment area.

**Note:** If you put a second or third preference, this will not jeopardise your chance of getting your first preference.

**What if I have recently changed address?** We may need to see proof of residency if the change of address has changed your catchment area. We may need to see proof of ownership or a tenancy agreement for your new property and proof that you no longer live at your old property. For further information see page 14-15.

## Can my child attend a school outside Derby?

The 1996 Education Act gives you the right to ask for your child to go to a school run by another council. If you want your child to attend a school outside Derby, you should still fill in the Common Application Form from Derby City Council and include the school as one of your preferences.

## Can my child attend a Derby school if we don't live in Derby?

If you don't live in Derby but would like your child to attend a school in Derby, you will need to fill in a Common Application Form from the Council covering the area in which you live. We will look at your application using the admissions criteria on [pages 18-35](#)

### Can my child transfer early?

In general, the Council believes it is better for 'able children' to stay with children of the same age. Able children who do this enjoy a richer and broader curriculum instead of being hurried through the education system, which may lead to difficulties later. Although the Council will not normally approve early transfer, we may allow an exceptionally able, mature child to transfer to secondary school at the age of 10+ rather than 11+. A child must show exceptional intellectual ability for the Council to consider an early transfer.

If you want the Council to consider your child for early transfer, you must talk about it to the head teacher of your child's present school by the end of the summer term - a full year before the proposed transfer.

### Acknowledging Applications

The Council will acknowledge all applications it receives within two weeks. This will state the ranking order of your schools, and you should check this to make sure it is correct.

**Important note:** If you do not get an acknowledgement letter or email it means that we have not received your application form, or it has been processed using an old address. You must get an acknowledgement for your application to be considered, even if you have hand-delivered, or sent your application by Recorded or Special Delivery. If you do not get this letter at least one week before the closing date, please contact the Council as soon as possible on **01332 642350**.

### The closing date

To apply, you must fill in the Common Application Form (online or paper) that you can get from schools or the Council. **The closing date for applications is 31 October 2025.**

**If you apply for a place after 31 October 2025, the admissions authority for the school will not look at your application in the first round of allocations, to decide which children they can admit in the next school year. After that, the admissions authority will look at your application and any other late applications, not made by the closing date, to see if there are spare places. If there are no spare places at any of your preferred schools, you will be allocated the nearest school with places. This may not be your catchment school.**

**What happens if I want to make changes to my application after the closing date?** Preferences can only be changed after the closing date if you change address. If you change your preferences after the closing date, it will turn your application from being an on-time application to one that is late. The Council will then deal with your application only after dealing with those that are on time. Applications are dealt with by using the address the child lives at the closing date. Reassessment of the new address will then be made after provisional offers have been decided.

### When will I know the result of my application?

**On 2 March 2026:** this is 'National Offer Day' when parents of children living in Derby will be contacted, naming one school place for their child. Those who applied by telephone or paper form will be sent a letter second class posted out on this day. We will send an email to parents who apply online.

This offer will be for the highest-ranked school that can give your child a place. Parents who applied online will be able to view the offer by logging into their account on National Offer Day.

- If your highest ranked school can offer a place, all applications for schools ranked lower will be disregarded.





- If only your second preference can offer a place, applications for lower ranked preferences will be disregarded. The Council will then place your child on the waiting list for your first preference and will offer you the right of appeal (see page 12).
- If none of your preferred schools can offer a place, or you did not apply for any school, the Council will allocate your child a place at the catchment area school - if places are still available - or the next nearest Derby school with places available. You will be given the right of appeal for those schools ranked higher than your final offer.

The admission authorities must meet your request wherever possible - as long as this doesn't make the school overcrowded, see Admissions Limit (page 5). If you have religious or philosophical convictions that influence your choice of school, you should mention them in your application.

The Council that maintains the school, or the governors of aided or foundation schools, will take the decision on whether your child can be offered a place. (Please also see Transport on page 13).

**What happens if my application is refused?** If your application is refused then you can appeal, please see page 12 for information on how to appeal. We will also add any unsuccessful preferences, higher than the offered place, on to a waiting list.

We will set up this list on 2 March 2026 and will keep it going up to the end of the first term. After this date, schools may keep a waiting list of children who have still not been offered places. Schools do not have to keep a waiting list, so you will need to check that your preferred school/schools will carry on keeping the list.

Children will be ranked on all waiting lists according to the order of the over-subscription criteria; these can be found on pages 17-35. This ranking can change as new pupils go on to, or come off, the waiting list. We will add any applications we receive after the closing date to the waiting list, using the rank order.



# Changing Secondary School In-Year

## Changing secondary schools during the school year

We process applications to secondary schools for all parents living in Derby City Council's catchment area. As a parent you have a legal right to express a preference for a school that you want your child to attend. If your preferred school has a place, then a place should be offered to your child.

Moving your child to another secondary school is a very serious step to take. It can affect your child in many ways. It is important that you consider whether a transfer is really the best option. Before deciding to move your child to another school, please read this information carefully.

Moving to a new school may not mean that a problem is solved - it can happen again and could be worse because your child will not know who their new teachers and other pupils are. Your child and their needs will not be known to staff. Many things that worry parents and pupils can be sorted out without the need to move schools. Talking to your child and staff at your child's present school should avoid a transfer between schools in almost all circumstances.

Whilst all schools follow the National Curriculum, schools will teach different topics at different times of the year. If your child moves school, they are likely to miss work, which will affect their ability to be entered for, or be successful in, examinations and national tests. This is especially important once pupils reach Years 10 and 11, when it is unlikely that they will be able to take the same options at a new school.

For these reasons, we will always refer requests for transfer back to their current school, unless the request has resulted from a house move where the pupils cannot travel to their current or previous school.

If your child is unhappy at school or you feel that your child is being bullied, speak to their class tutor or head of year or make an appointment to see the Headteacher.

If you have a complaint about the school, the teachers or the work your child is doing and it cannot be resolved by the teaching staff, put your complaint in writing to the school's governors.

If your child is not attending school, talk to your child about why they do not want to attend and speak to their teachers. You can also talk to an Education Welfare Officer on **01332 641448**.

## Applying for a place

If you want to apply for a secondary school place in Derby City, you can apply through your parent account at [derby.gov.uk/secondary](https://derby.gov.uk/secondary). You can contact us at: [secondary.admissions@derby.gov.uk](mailto:secondary.admissions@derby.gov.uk), or **01332 647912** to request a paper application form, or to find out which schools have places.

You can apply for most schools as an 'in-year' applicant on our common application form; schools that you cannot apply for as an 'in-year' applicant are the UTC, Alvaston Moor Academy, Landau Forte College, Lees Brook School, or any independent school. You must contact these schools directly to request a place.

**Can my child attend a school outside of Derby?** If you want to apply for a school outside of the city, you will need to contact the Council where the school is to enquire about the application process.

## Can my child attend a Derby school if we don't live in Derby?

Yes, if you want to apply for a school in Derby, you can do this by creating an account on the parent portal at [derby.gov.uk/secondary](https://derby.gov.uk/secondary). You can also contact us on **01332 647912**, or email [admissions@derby.gov.uk](mailto:admissions@derby.gov.uk) to find out which schools have vacancies and request a paper application form.

**What if I have recently changed address?** We may need to see proof of residency if the change of address has changed your catchment area. We may need to see proof of ownership or a tenancy agreement for your new property and proof that you no longer live at your old property. For further information see page 14-15.

## How places are allocated

Please see the section How places are Allocated on page 13.

### **When will I know the result of my in-year application?**

A decision will be sent to you within 15 school days of us receiving the application and will be one of the three outcomes listed below:

- A school place is offered where your child meets the criteria for a place at your first preferred school.
- A school place is offered at the highest rank school where your child meets the criteria for a place at the second or subsequent preferred school.
- Where it is not possible to offer your highest ranked school, your child is added to that school's waiting list, and you are informed of how to appeal to the Independent Appeal Panel if you wish to, along with any next steps.

### **When will my child start at the new school?**

If your child already has a school place in the city, we must give schools six weeks to arrange your child's admission. If your child is currently out of school, we must give schools two weeks to arrange the admission.

### **What happens about transfer at 16+?**

Schools can set academic entry criteria in their sixth form admission arrangements. The criteria must be the same for both external and internal places. Please contact the school or college directly for information on the admissions criteria, and how to make an application.

Young people continuing with education after the age of 16 can attend school sixth forms or further education colleges. Your child's school and the Council will be

able to help with advice and information. Some students may qualify for financial help (see page 16).

### **Moving into Derby?**

Contact the Admissions Team on **01332 647912** or email

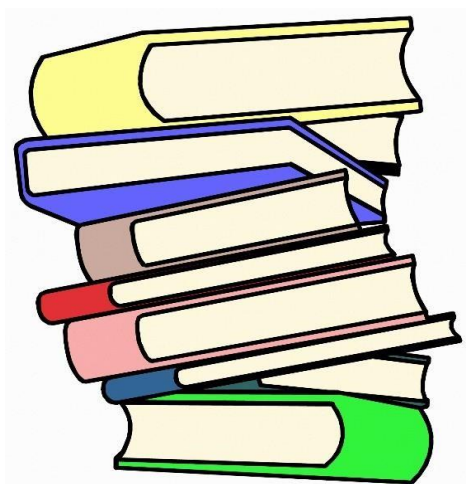
[secondary.admissions@derby.gov.uk](mailto:secondary.admissions@derby.gov.uk) if you need help or further information.

### **Definition of an unplaced child**

If an application is received for a child outside the normal admission round, first priority will be given within categories 1-7 to pupils who have not been on a City roll during the academic year of application, and must meet one of the following criteria...

- Children leaving the criminal justice system or a Pupil Referral Unit who need to be reintegrated into mainstream education.
- Children who have been out of education for two months or more.
- Children of Gypsies, Roma, Travellers, refugees, and asylum seekers.
- Children who are carers.
- Children who are homeless.
- Children with unsupportive family backgrounds for whom a place has not been sought.
- Children with special educational needs, disabilities or medical conditions but do not have an Educational Health and Care Plan (EHCP).

**Note:** A child will not be considered unplaced if the Council has allocated a school place within the normal admissions round or is able to offer a school place within reasonable distance outside of the normal admissions round.



# How places are allocated

For community schools, the Council, as the admission authority, will decide about the offer or refusal of a place.

For academy, foundation, trust or voluntary-aided schools, the Council will offer or refuse a place on behalf of the school governors who are the admissions authority.

Once the admission limit is reached, the admissions authority cannot offer any more places, even to children who have moved into the school's catchment area.

The admissions limit covers admissions for the whole school year. In years other than the first year, the admissions authority may be able to admit pupils above the admission limit if it chooses. However, they must consider the school's physical capacity.

Schools must allocate places in accordance with their over-subscription criteria, each schools' criteria can be seen on pages 17-35.

Pupils who have an Education, Health and Care Plan (EHCP), which the Council considers can best be met in a particular school, will be given priority admission over all others.

Places will be allocated using the home address of the child – the home address is the address the child resides in at the time of application and at the time of admission, and, in the case of split households, as shown by who receives the Child Benefit.

We will give places to those parents who have made a preference before those parents who have not made any preference.

If you are applying for a change of secondary school, outside the normal admissions round, priority will be given to pupils who have not been on a school roll during the academic year of application.

## **Are admission arrangements different for voluntary-aided, foundation, trust, The UTC, and academies?**

Yes, because arrangements for admission to voluntary-aided, academies, foundation, The UTC and trust schools, and the decisions about which children are offered a place, are the responsibility of either the school governors or the Trust Board.

If you want your child to attend a foundation, trust, voluntary-aided school, or an academy you should include it on the Common Application Form that you can get from the Council or the school.

If the school is over-subscribed, then the school governors/Trust Board will look at the applications and they will use their own admissions criteria. The information at the back of this booklet gives the numbers of applications received and the number of places at each school. We will write to you, on behalf of the governors at the school, informing you of their decision. If your child's application is refused, we will explain how you can appeal in the letter.

## **How do academies, foundation schools, UTC, Trust Schools and Voluntary aided decide who has priority?**

We show the criteria the schools use on pages 17-34.

When schools keep a waiting list of children who have not been offered a place, they use the same order of priority as when they first gave places.

Pupils who have an Education, Health and Care Plan (EHCP), which the Council considers can best be met in a particular school, will be given priority admission over all others.

## **Children without a School Place**

For an In Year Application, if the Local Authority is unable to offer you a place at any of your preferred schools, we will let you know in your decision letter, but we will also let you know if there are places at other schools within statutory walking distance. It is important that you contact us immediately for further information, as these places can go quickly.

If there are no places within statutory walking distance, your application will be heard at our Secondary Placement Panel, where a suitable school will be allocated, within statutory walking distance.



# Appeals

In many cases, schools will be able to meet all requests for admission. Some schools, however, may have to turn down some applications if the number of children seeking a place is above their admission limit. If your child is turned down from the school that you prefer, you will be told in the letter we send you on National Offer Day. You should contact the Admissions Team on **01332 642350** or email [admissions@derby.gov.uk](mailto:admissions@derby.gov.uk) for advice and information on other schools. The letter will also give information about how you can appeal against the decision if, after discussing the issue with the Council, you are unhappy with the other school we offer you.

If you want to appeal against a decision not to admit your child to **Littleover Community School only**, you must first fill in an Appeal Form at [derby.gov.uk/appeals](http://derby.gov.uk/appeals). You can also request a paper form by calling **01332 642697**. You must lodge your appeal within three weeks of receiving your refusal letter. Appeal forms submitted after this date will not be processed within the main batch of appeals unless there are exceptional circumstances why your form was late.

**All other Derby City Schools are Foundation, Trust, or Voluntary-Aided Schools, or Academies and you need to contact the schools directly for information on how to appeal.**

## How do I appeal?

Community schools

- For secondary transfers for the next September, you must return the Appeal Form by the date in the decision letter.
- For admissions at other times of the year, you should return the Appeal Form to the Council within three weeks of its receipt.

Appeals which are sent in late are not normally processed within the main batch of appeals, but if you do not return your appeal form within the 21-day time limit, because of exceptional circumstances, you should return your completed appeal form as soon as possible and send a covering letter to explain why your appeal was late. The Appeals Business Manager will then decide whether your appeal

will be allowed to go ahead with the main block or not.

- An Independent Appeal Panel will consider your case. This meets specially to look at your appeal, although the panel may hear several individual cases in turn at the same meeting. The panel normally meets during the Summer term for September admissions, or as soon as they can be arranged at other times.
- The Council's Appeals Business Manager will tell you about the time and place of the appeal hearing.
- The hearings are usually held in private. You can ask a friend to come with you or you can arrange for someone to come on your behalf.
- You, or your representative, will be given the opportunity to speak in support of the case.
- The Appeals Business Manager will write and tell you of the Panel's final decision.
- This decision must be accepted by all parties as the Panel's decision is binding - The Strategic Director for People Services or their staff, City Councillors or Members of Parliament cannot change the decision.
- We will not consider a further appeal for the same school in the same academic year unless there are significant and material changes in your circumstances or those of the school.
- For secondary transfer applications made within the normal admissions round appeals must be heard within 40 school days of the deadline for lodging appeals as detailed on the decision letter.
- For late applications, appeals should be heard within 40 school days from the deadline date for lodging appeals where possible, or within 30 school days of the appeal being lodged.

## General Advice

- **Don't panic.** You will not get an earlier appeal or a better hearing by sending in your case early. Prepare fully!
- **CONTACT THE SCHOOLS YOU WANT TO APPEAL TO IN ORDER TO ENSURE YOU GET THE RIGHT INFORMATION.** Every school handles their appeals in their own way.
- Accept the school place you have been offered as you can always reject it later on if you manage to get another school place you prefer more. It is better to have a school place than no school place at all.



# Transport

**Will the Council help with transport?** Most parents choose a school for their child within walking distance of their home. The walking distance is given, in law, as three miles for children aged eight and over.

We measure the distance by the shortest available route. There may be exceptions to this if the Council decides the route to the school is dangerous for an accompanied child to walk, or if your child is entitled to Free School Meals or you are in receipt of the maximum entitlement of Working Tax Credit.

If your child is attending school full-time but has no school within walking distance of your home where we can make suitable arrangements for them to attend, we will help with transport to the nearest suitable school. We will give help up to the end of compulsory school age - this is the end of the school year in which your child reaches the age of 16.

We issue bus passes or refunds where appropriate and we arrange special contract transport if public transport is not available. If you choose to send your child to a school which is further away, even though we can make suitable arrangements for your child to attend a school within walking distance, we will not normally provide help with transport. However, if your child is entitled to Free School Meals, or you are in receipt of the maximum entitlement to Working Tax Credit, transport may be provided to one of the three nearest schools if the child lives more than two miles, but not more than six miles from that school, or

to the nearest school based on religion or belief up to a maximum of 15 miles.

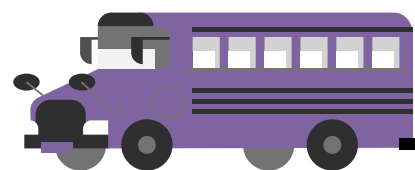
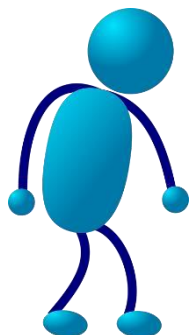
Transport may be given on medical grounds if the request is supported by medical evidence.

**Important note:** At St Benedict - A Catholic Voluntary Academy, and St John Houghton Catholic School, only children attending for faith reasons who are entitled to Free School Meals or if their parents are in receipt of the maximum entitlement to Working Tax Credit will be entitled to free transport.

The school must be the nearest Faith School, and the child must live more than two miles but less than 15 miles from the school.

**Where can I get more information?** Contact the School Travel Team at the Council at [schooltravel@derby.gov.uk](mailto:schooltravel@derby.gov.uk) or **01332 642716** if you have any questions about whether your child qualifies for transport or how to ask for a review if appropriate. The Transport Policy can be read on-line by visiting [derby.gov.uk/travelsupport](http://derby.gov.uk/travelsupport)

The Council's strategy for sustainable travel can also be viewed by visiting [derby.gov.uk](http://derby.gov.uk).



# Other Information

## Attending School

Parents must, by law, make sure their child receives 'sufficient and suitable' education until they reach the school leaving age. If you choose to send your child to a school, you must make sure they go to school every day and arrive on time. The Council has a legal duty to see that you do this. If you want help, our Education Welfare Service can help you work through poor attendance. The Council sometimes takes legal action. If you're worried, ask for advice from the school or the Education Welfare Service on **01332 641448**. Help at an early stage is, usually, the best way forward.

Your child must go to school regularly to make satisfactory educational progress. Of course, your child may have to stay away due to illness or other reasons, but they should only be off when it is essential. Your child's school, or the Council, can advise you when it is acceptable, by law, to be away. When your child is off, you must let school know as soon as possible, giving the reason.

Schools must record all pupils' absences in the register. Every year, they must also publish the absences that they have agreed to, and where they are not agreed, in the School Profile. They must also include, in your child's yearly reports, the number of times your child has been absent without authority.

The Local Authority recommends to schools that they adopt the Authority's Leave of Absence Policy regarding term time holidays. You will need to check with your child's school what their policy is.

**Note:** Unauthorised leave could result in your child being removed from the school's roll.

**What happens if I change address?** House Moves – If your catchment area changes due to a house move, we will need to see proof that this is your child's main residential address. A main residential address is where your child lives at time of application and admission. In cases where children share residency of parents at different addresses, the main residence will be the address where the child lives for most of the week. Where this is equal, we will ask parents to nominate an address.

If this information is insufficient or inconclusive, the Council can request further information. We can only accept one application from one address, per child. The parents or carers must ensure that they are both happy with the schools listed on the child's application.

We need this information to prevent school places being gained fraudulently. Admission authorities have the right to withdraw the offer of a school place if it is found that it was obtained by a fraudulent or intentionally misleading application, up to one term after admission.

If, after one term, it is found that the place was obtained in this way, any brothers or sisters of the child will not benefit from 'sibling priority'.

## Addresses of Convenience

We will only use a child's legal guardian's address, their child's only or main residence, for their child's application for a school place. The following examples below are considered addresses of convenience and informal living arrangements, which will not be accepted:

- Relatives' addresses which are not the child's legal guardian's address or their main residence
- friends' addresses which are not the child's legal guardian's address or their main residence
- temporary addresses (used to improve your priority for a school place)

**Important:** If it is discovered that a school place has been offered based on an address of convenience, that school place will be withdrawn (retracted) under the School Admissions Code (2021).

We need to see the end of tenancy or proof of sale of the original property and tenancy agreement for the new property or proof of purchase of the new property, for example a solicitor's letter about the completion of the sale and the exchange of contracts. If this information is insufficient or inconclusive, the Council can request further information.



## Applications for entry into Reception, Year 3 and Year 7 in September 2026.

What happens if:

- **I move before the closing date?**

If you move before the closing date and can provide proof that you were resident at that address before the closing date, your application will be assessed from that address.

- **I move after the closing date but before National Offer Day?** If you move after the closing date but before National offer day, we will assess your application from your old address to see if you would have been offered this place. Once the decisions have been made on National Offer Day, we will update your address for waiting list purposes if we haven't been able to offer you your preferred school.

- **I move to a new address after National Offer Day?** If you change address after the National Offer Day but want to keep the place at the school we have offered you, we will re-assess your application from your new address to see if you would still have been offered the place and let you know the decision.

**IMPORTANT:** We measure distances from home to school by straight line using national Ordnance Survey Set Points, if you move further away than the last person offered, we may have to withdraw the school place.

- **I own more than one property?** If you also own a property within 20 miles of the school(s) stated on your application form, the property

closer to the school **may** not be accepted even if the other property is rented out to somebody else. If this information is insufficient, or inconclusive, the Council can request further information.

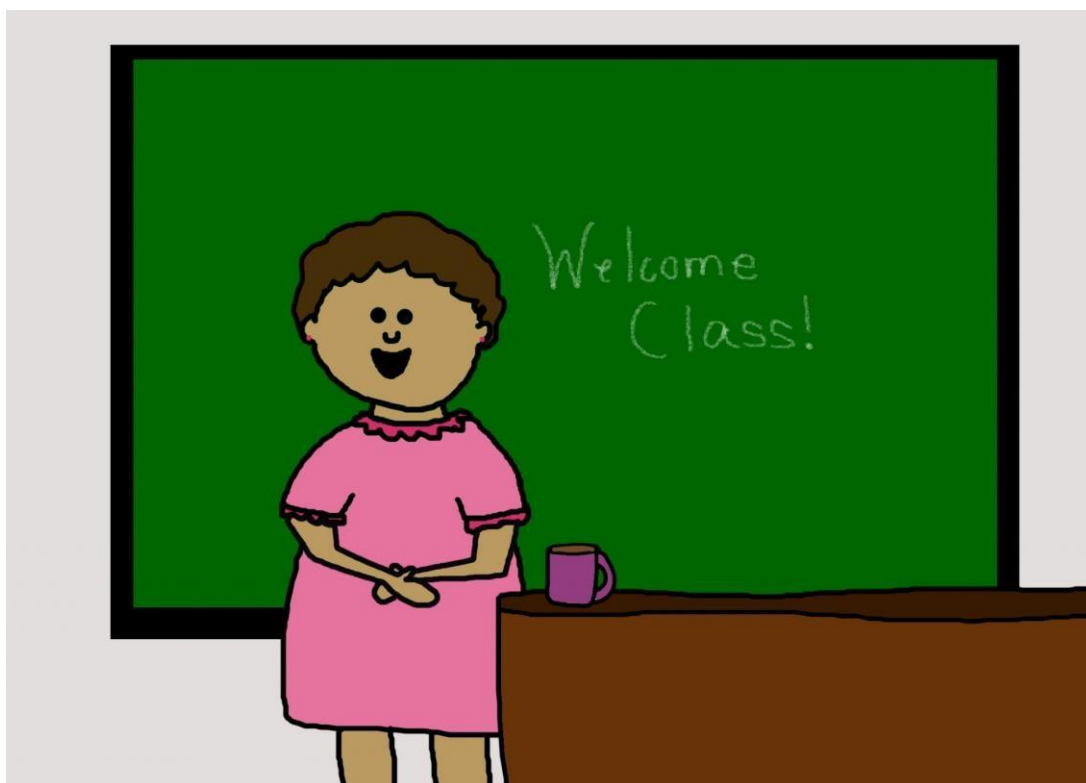
- **I am new to the City?** If you move into the city and cannot show proof as above, the residency will be calculated using the furthest point to the city boundary from the school applied for.
- **Applications from Overseas** Parents can apply for a school place at a Derby school whilst still living overseas but need to give the overseas address the child is living at the time of the application and not an address where the child is expected to live at. Parents then need to advise us when the child has arrived to take up permanent residence in the UK and let us know the new Derby address. It is the responsibility of parents to check that their children have a right under their visa entry conditions, to study at a school. Schools are required to see evidence at the time of enrolment and will advise what documentation they will need to see. Those moving to Derby mid-term during the school year need to apply about three weeks before the school place would be needed.

### **Separated parents**

If the child's parents are separated or divorced, there are various things that need to be considered depending on the situation.

### **What if the child's parents live at separate addresses?**

If the residency of your child is split between both parents, we consider the home address to be the



address where the child lives for most of the school week (Monday to Friday).

If the child spends equal amounts of time at both addresses, you will be asked to nominate which address you wish to use for the purpose of allocating a school place.

### **What happens if both parents cannot agree on the choice of schools?**

You are advised to seek to reach agreement with any other person who may apply for a place for your child, such as another parent. If one parent has parental responsibility (as evidenced by documentation) that parent's application is the one that we will accept. If parents are separated and both have parental responsibility, then they must determine between them who will make the application and if they cannot agree then either parent may seek to have that determined by a Court.

In the event of a dispute between parents who do not have this matter resolved by the Court by the closing date, we will accept the application by the parent with whom the child resides the majority of the school week and, where that is equal, we will be unable to process the application further until the matter has been resolved. We encourage parents to resolve any disagreements quickly as delay may affect the availability of places at preferred schools.

### **Short Stay Schools**

The Council is responsible for providing education to those children who have been excluded from mainstream school or are without a school placement. The Behaviour Support Service delivers this in the pupil referral unit.

There are several places across Derby providing appropriate education at Key Stages 2-4. We provide this in partnership with other agencies to offer a wider educational experience, including vocational and college options at Key Stage 4. The Council will place a child temporarily in the unit until a school placement has been identified.



The child is referred for placement through the exclusion process or through the Secondary Placement Panel and, when ready, placed at schools by the In-Year Fair Access Panel. Children may be placed at any school in the city, regardless of the pupil numbers already at that school. The short stay school also provides time-limited, part-time placements for children in danger of permanent exclusion from their mainstream school.

### **Age for staying in learning**

Current legislation states that from 2015 all young people need to stay in some form of learning until the age of 18.

### **How will this affect your child?**

This doesn't necessarily mean staying at school. There are other options available to your child when they finish Year 11. They can choose whether to stay on in full time education, for example in school or college, take an Apprenticeship or undertake part-time training if they are working or volunteering for more than 20 hours per week.

### **What help is out there?**

The Council has a dedicated Team of Early Help Personal Advisors for students who have left statutory education. They provide information, advice and guidance on careers and learning to students. They can advise you on the options available and help to prepare young people to make the best decisions. Further information can be found here: [NEET](#)

### **School uniform**

This issue is for school governors to decide. The Council believes that any rules on school uniform should consider the cost and should not be too expensive.

### **Access to school records**

You may see the educational records that the school keeps of your child if you give the school enough notice. The school has to comply with data protection laws, and you should contact the head teacher of the school if you want to do this.

### **Annual School prospectus**

Schools produce their own prospectus, which must include information about special educational needs and what they provide for disabled people.



# Map of schools in Derby

Key

Secondary Schools

**Academy**  
The governors of the school are the admission authority

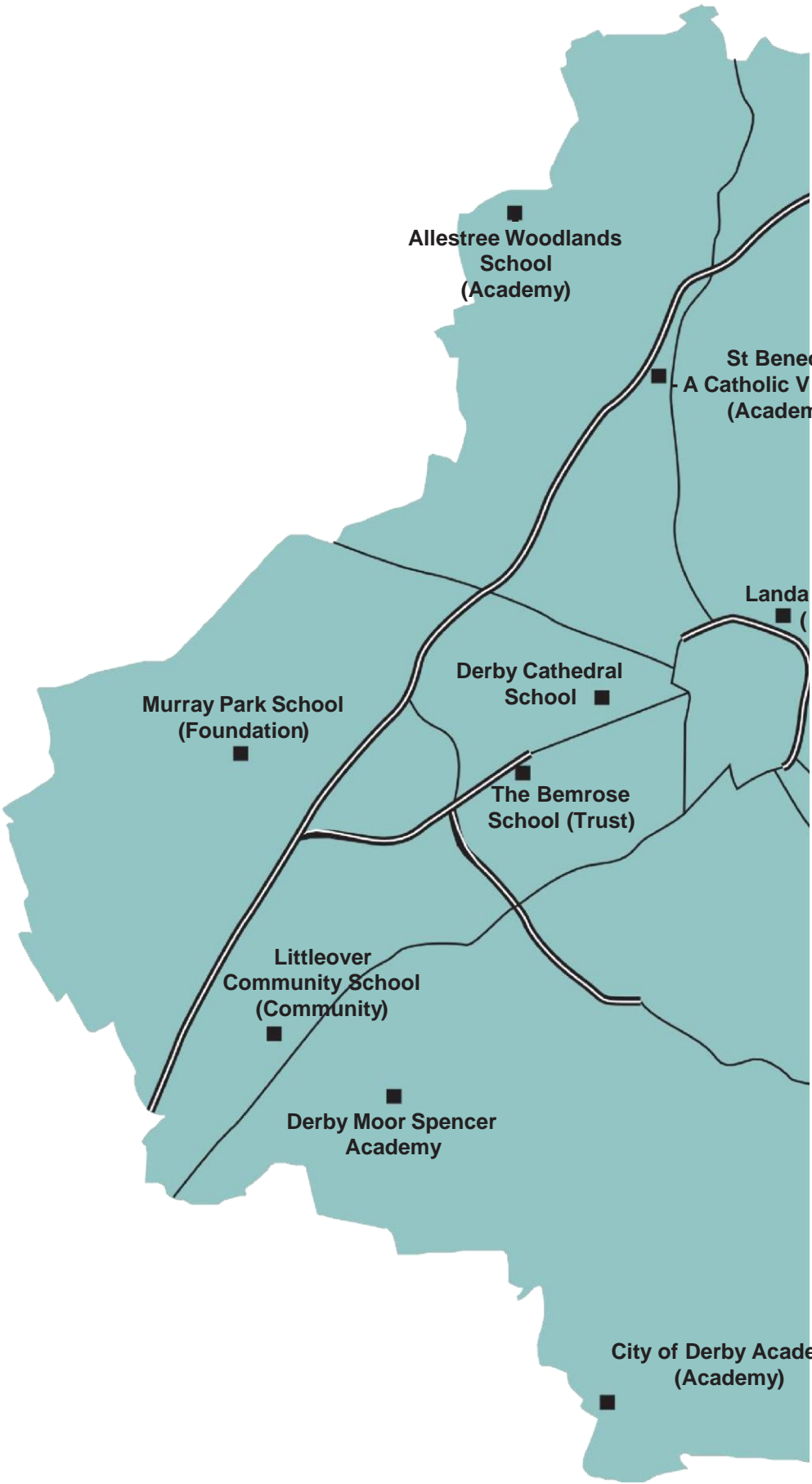
**Community**  
Derby City Council is the admission authority

**Foundation**  
The governors of the school are the admission authority

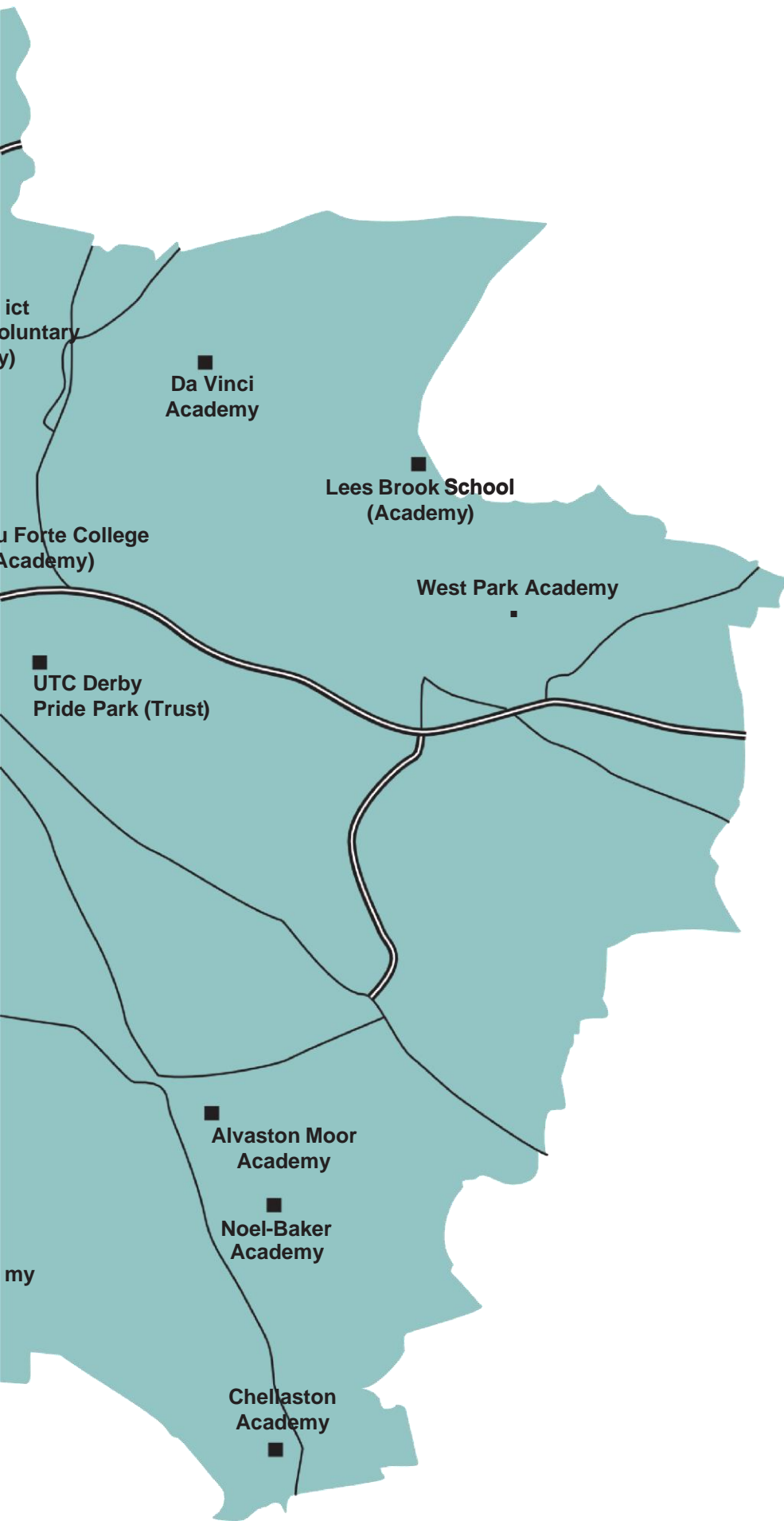
**Trust**  
The governors of the school are the admission authority

**Voluntary Aided**  
The governors of the school are the admission authority

**UTC**  
The governors of the school are the admission authority







Reproduced from the Ordnance  
Survey mapping with the  
permission of the Controller of  
Her Majesty's Stationary Office. ©  
Crown  
Copyright. Unauthorised  
reproduction infringes Crown  
copyright and may lead to  
prosecution or civil proceedings.

Derby City Council Licence No.  
100024913 (2006)

# Allestree Woodlands School

## Academy

## Enhanced Resources

Blenheim Drive, Allestree, Derby DE22 2LW **Telephone:** 01332 551921 **Headteacher:** Mrs G Penny

**Session times:** 8.40 am - 3.10pm

## School Details

Age Range	Specialism	Open Evening	Where is Uniform available from?	Does the school maintain a waiting list after the first term?
11-18	None	Contact the School	Morley's (Tie also available from School)	Yes

## Accessibility

Disabled Parking	Basic Wheelchair Access into Main School Building	Basic Wheelchair Access into all Buildings on site	Disabled Toilet	Hygiene Room inc changing bed/shower
Yes	Yes	Yes	Yes	Yes

## Year 7 Intake Offers

Intake	Admissions Limit	Number of Applications	Offers	SEN	Looked After Children	Catchment Area Sibling	Catchment Area	Out of Area Sibling	Out of Area	Allocated	Applications Refused
2023	240	468	240	12	2	63	112	25	26	0	32
2024	240	440	240	4	2	55	101	22	56	0	25
2025	240	459	232	4	0	49	82	19	66	12	0

## Over-Subscription Criteria

1. In line with the 2021 School Admissions Code, children who appear (to the admissions authority) to have been in state care outside of England and ceased to be in state care, as a result of being adopted, will be given equal first priority in admission arrangements, alongside looked after children (LAC) and children who were previously looked after by English local authorities (PLAC).
2. Children who are both living in the normal area served by the school and have siblings\* who will be in Years 8-11 at the time of the proposed September admission. Please note that the sibling criteria is not applicable when a sibling will be in Year 12/13 in the academic year of proposed admission.
3. Other children living in the normal area at the time of admission.
4. Children who do not live in the normal area served by the school but who have siblings\* who will be in Years 8-11 at the time of the proposed September admission. Please note that the sibling criteria is not applicable when a sibling will be in Year 12/13 in the academic year of proposed admission.
5. A child with a parent/carers who is employed at Allestree Woodlands School.
6. Other children whose parents have stated Allestree Woodlands School as a preference on the common application form.
7. Children whose parents stated Allestree Woodlands School as a preference on the common application form but did not return the form to Derby City Education Authority by the closing date.

In categories 2 to 6, when choices have to be made between children satisfying the same criteria, children living nearest to the school, measured by a straight line between their home address and the school, have priority. In category 7, places will be allocated in the same order of priority as for categories 2 to 6. Where children in category 7 have equal priority, places will be allocated to those living nearest to the school, measured by a straight line between the home address and the school using the National Ordinance Survey Set Points.

\* The school determine the meaning of 'Sibling' to be a natural brother or sister, a half brother or sister, a legally adopted/fostered brother or sister, a half brother or sister or a stepbrother or sister living in the same household who, in any of these cases, will be living with them at the same address at the date of their entry to the school

**Admission Limit: 240**

**Furthest distance offered: 8.314 miles**

# Alvaston Moor Academy

Brackens Lane, Alvaston, Derby DE24 0AN **Telephone:** 01332 576777

**Head of Academy:** Miss G Tyers **Session times:** 8.30 am - 3.00 pm

## School Details

Age Range	Specialism	Open Evening	Where is uniform available from?	Does the school maintain a waiting list after the first term
11-16	None	Thurs 9 October	Online or local stores (contact the Academy)	No

## Accessibility

Disabled Parking	Basic Wheelchair Access into Main School Building	Basic Wheelchair Access into all Buildings on site	Disabled Toilet	Hygiene Room inc changing bed/shower
Yes	Yes	Yes	Yes	Yes

## Year 7 Intake Offers

Intake	Admissions Limit	Number of Applications	Offers	SEN	Looked After Children	Catchment Area Sibling	Catchment Area	Out of Area Sibling	Out of Area	Allocated	Applications Refused
2023	240	273	122	0	1	38	50	16	17	93	0
2024	210	288	206	5	0	0 - see criteria	56	16	37	92	0
2025	210	248	189	1	0	0 – see criteria	66	14	69	65	0

## Over-Subscription Criteria

1. Looked after children or children who were previously looked after but immediately after being looked after became subject to an adoption, child arrangements, or special guardianship order including children who were previously in state care outside of England and who ceased to be in state care as a result of being adopted.
2. Children who are both living in the catchment area served by the school and have siblings of compulsory school age still attending the school at the time of admission.
3. Other children living in the catchment area at the time of admission. Where this is the case, the Council will assess applications from the address the parents are living at the closing date and will reassess applications on the National Offer Date, where necessary.
4. Children who do not live in the catchment area served by the school but who have siblings of compulsory school age attending the school at the time of their admission.
5. Other children who have requested a place.

Siblings: Brothers and sisters are classed as having one or both natural parents in common, are related by parent's marriage or are adopted or fostered. Brothers and sisters must be living at the same address.

**Admission Limit: 210**

**Furthest distance offered: 2.632 miles**

# The Bemrose School - All Through

Trust school

Enhanced Resources

Uttoxeter New Road, Derby DE22 3HU Telephone: 01332 366711

Executive Headteacher: Mr Wilkinson Session times: 8.30am - 2.50pm

## School Details

Age Range	Specialism	Open Evening	Where is uniform available from?	Does the school maintain a waiting list after the first term
3-19	None	Contact the School	The Bemrose School and Uniform Direct	No

## Accessibility

Disabled Parking	Basic Wheelchair Access into Main School Building	Basic Wheelchair Access into all Buildings on site	Disabled Toilet	Hygiene Room inc changing bed/shower
Yes	Yes	Yes	Yes	Yes – in Primary School

## Year 7 Intake Offers

Intake	Admissions Limit	Number of applications	Offers	SEN	Children Looked after	Catchment area Sibling	Catchment Area	Out of Area Sibling	Out of area	Allocated	Applications refused	Appeals lodged	Appeals allowed
2023	230	360	187	2	0	28	62	37	58	43	2		
2024	220	379	220	6	0	21	61	36	53	42	5	2	0
2025	230	369	230	13	0	32	72	21	58	34	0	0	0

## Over-Subscription Criteria

1. A 'looked after child' or a child who was previously looked after but immediately after being looked after became subject to an adoption, residence, or special guardianship order. [A looked after child is a child who is (a) in the care of a local authority, or (b) being provided with accommodation by a local authority in the exercise of their social services functions (see the definition in section 22(1) of the Children Act 1989).]
2. Children who are living in the normal area served by the school, with brothers or sisters attending the school at the time of their admission prioritised by distance.
3. Other children living in the normal area prioritised by distance
4. Children who do not live in the normal area served by the school but who have brothers or sisters attending the school at the time of their admission.
5. Other children whose parents have stated The Bemrose School as a preference on the common application form.
6. Children whose parents stated The Bemrose School as a preference on the common application form but did not return the form to Derby City Education Authority by the closing date.

In categories 3 to 5, when choices have to be made between children satisfying the same criteria, children living nearest to the school, measured by a straight line between their residence and the school, have priority. In category 5, places will be allocated in the same order of priority as for categories 2 to 4.

Admission Limit: **230**

Furthest distance offered: **3.648 miles**

# Chellaston Academy

Swarkestone Road, Chellaston, Derby DE73 5UB Telephone: 01332 702502

**Executive Headteacher:** Mr P Smith **Session times:** 8.30am - 3.00pm

## School Details

Age Range	Specialism	Open Evening	Where is uniform available from?	Does the school maintain a waiting list after the first term
11-18	None	Contact the school	Uniformity - Borrowwash	No

## Accessibility

Clothing 4 - Chellaston	Basic Wheelchair Access into Main School Building	Basic Wheelchair Access into all Buildings on site	Disabled Toilet	Hygiene Room inc changing bed/shower
Yes	Yes – including lift	Yes	Yes	No

## Year 7 Intake Offers

Intake	Admissions Limit	Number of Applications	Offers	SEN	Looked After Children	Catchment Area Sibling	Catchment Area	Out of Area Sibling	Out of Area	Allocated	Applications Refused
2023	300	460	300	2	1	NA	279	4	14	0	49
2024	300	450	306	10	2	NA	263	11	20	0	46
2025	300	505	300	5	3	NA	242	12	38	0	54

## Over-Subscription Criteria

- Children who are looked after and previously looked after. Looked After Children who, at the time of making an application to a school, are:
  - In the care of a local authority, or
  - Being provided with accommodation by a local authority in exercise of its social services functions.

If places remain following allocation in categories 1-3, then priority will be given to the applicant in category 4 whose permanent address is nearest to the Academy.

This is measured by a straight line from the centre of the child's main 'dwelling' to the Academy using the national Ordnance Survey set points.

Previously looked after children are children who were looked after, but ceased to be so because they:

- Were adopted under the Adoption Act 1976 or the Adoption and Children Act 2002, or
  - Became subject to a child arrangements order, or
  - Became subject to a special guardianship order.
- Children permanently residing in the normal catchment area at the time of admission.
  - Children who have an elder sibling in Years 8 to 11 who will still be attending the Academy at the proposed admission date.
  - Other children whose parents have requested a place.
  - Children whose parents did not submit a request for a place by the published closing date.

In category 5, places will be allocated in the same order of priority as for categories 1-4. Where children in category 5 have equal priority, places will be allocated by random allocation.

For the purpose of admissions, a brother or sister is classed as:

- A brother or sister sharing the same parents.
- A half brother or sister, where two children share one common parent.
- A step-brother or step-sister, where two children are related by a parent's marriage.
- An adopted or fostered child.

(A brother or sister must normally be living at the same address. Cousins are not classed as brothers or sisters).

**Admission Limit: 300**

**Furthest distance offered: 2.102 miles**

Places will be allocated to children in category 1 first. If there are insufficient places for all applications in category 2 or 3 places will be randomly allocated in the relevant category only. The process of random allocation will be undertaken by an independent third party.



# City of Derby Academy

Farmhouse Road, Sinfin, Derby DE24 3AR **Telephone:** 01332 270450

**Head of School:** Mr A Harding **Session times:** 8.40am - 3.10pm

## School Details

Age Range	Specialism	Open Evening	Where is uniform available from?	Does the school maintain a waiting list after the first term
11-16	None	Contact the school	Trutex via in-school pop up shops and online	The Council will maintain the waiting list for the school

## Accessibility

Disabled Parking	Basic Wheelchair Access into Main School Building	Basic Wheelchair Access into all Buildings on site	Disabled Toilet	Hygiene Room inc changing bed/shower
Yes	Yes	Yes	Yes	Yes

## Year 7 Intake Offers

Intake	Admissions Limit	Number of applications	Offers	SEN	Children Looked after	Catchment area Sibling	Catchment Area	Out of Area Sibling	Out of area	Allocated	Applications refused	Appeals lodged	Appeals allowed
2023	220	285	185	5	1	60	97	12	10	35	0	1	0
2024	210	280	201	2	0	36	62	11	23	68	0	0	0
2025	210	279	193	1	0	5	108	7	25	46	0	0	0

## Over-Subscription Criteria

The City of Derby Academy will first accept all pupils with a statutory right to a place through an Education Health and Care Plan naming the Academy. After the admission of these pupils, criteria will be applied for the remaining places in the order in which they are set out below:

- Looked After children or previously Looked After Children.
- Children who are both living in the catchment area served by the Academy and have siblings\* on roll at the Academy at the time of application.
- Other children living in the catchment area at the time of admission. For those families who move after the closing date, but before the offer date, the Council will assess your applications from the address where the parents were living, at the closing date, and will reassess applications on the National Offer Day.
- Children who do not live in the catchment area served by the Academy but who have siblings on roll at the Academy at the time of application.
- Other children whose parents have requested a place.
- Children whose parents did not request a place by 31 October 2025.

Where there are more applications than places after application of criteria a) to e) preference will be given to pupils who live nearest the Academy as defined by the straight-line distance from the Academy using the National Ordnance Survey set points.

For category f) places will be allocated in the same order of priority as those in categories a) to e). Where these applications have the same priority, places will be allocated to those living nearest the Academy as defined by the straight-line distance from the Academy using the National Ordnance Survey set points.

**Admission Limit: 210**

**Furthest distance offered: 2.876 miles**

# Da Vinci Academy

St Andrew's View, Derby DE21 4ET **Telephone:** 01332 831515

**Headteacher:** Mrs Scattergood **Session times:** 8.30 am - 3.05 pm

## School Details

Age Range	Specialism	Open Evening	Where is uniform available from?	Does the school maintain a waiting list after the first term
11-16	None	Thursday 25 September	Uniform Direct	The Council will maintain the waiting list for this school

## Accessibility

Disabled Parking	Basic Wheelchair Access into Main School Building	Basic Wheelchair Access into all Buildings on site	Disabled Toilet	Hygiene Room inc changing bed/shower
Yes	Yes	Yes	Yes	Yes

## Year 7 Intake Offers

Intake	Admissions Limit	Number of applications	Offers	SEN	Children Looked after	Catchment area Sibling	Catchment Area	Out of Area Sibling	Out of area	Allocated	Applications refused	Appeals lodged	Appeals allowed
2023	160	212	160	3	1	43	85	5	23	0	4	7	1
2024	150	228	150	2	0	38	72	9	22	7	4	0	0
2025	150	219	148	1	0	32	114	11	49	13	0	0	0

## Over-Subscription Criteria

In the event of oversubscription within any of the criteria listed below, preference will be given to applicants who live closest to the academy, as measured in a straight line (by a computerised geographical information system) from a point on the academy site to a point at the pupil's home, i.e. as the crow flies, both identified by the Local Land and Property Gazetteer. Where two or more pupils are equal in all respects and it is therefore not possible to differentiate between them, a method of random allocation by drawing lots will be used to allocate places (supervised by someone independent of the Academy Trust).

1. Looked after children and all previously looked after children, including those children who appear (to the admissions authority) to have been in state care outside of England and ceased to be in state care as a result of being adopted.
2. Children who are both living in the catchment area served by the school and have brothers or sisters of compulsory school age still attending the school at the time of admission.
3. Other children living in the catchment area at the time of admission. Where this is the case, the Council will assess applications from the address the parents are living at the closing date and will reassess applications on the National Offer Date.
4. Children who do not live in the catchment area served by the school but who have brothers or sisters of compulsory school age attending the school at the time of their admission.
5. Other children whose parents have requested a place.

6. Children whose parents did not request a place by 31st October 2025.

The above criteria may be overridden, and priority given to an applicant who can establish any of the following:

- Pupils with special educational needs that can only be met at the named academy (e.g. where the academy has specialist provision) \*
- Children of travellers, gypsies and Roma
- Pupils with exceptional medical, mobility, or social grounds that can only be met at the named academy\*  
\*Applications in these categories must be supported by a statement in writing from a doctor, social worker or other relevant professional. This is necessary because you will be asking the academy to assess your child as having a stronger case than other children. Each case will be considered on its merits by the Academy Trust.

Note: For admission purposes, the Academy Trust considers the following as siblings:

- A brother or sister who share the same parents
- A half-brother or half-sister, where two children share one common parent
- A step-brother or step-sister, where two children are related by a parent's marriage
- Adopted or fostered children living in the same household under the terms of a Child Arrangements Order.

**Admission Limit: 150**

**Furthest distance offered: 4.032 miles**

# Derby Cathedral School

## Academy

Great Northern Road, Derby, DE1 1LR **Telephone:** 01332 325710

**Email:** info@derbycathedralschool.org.uk **Principal:** Mr A Brown **Session times:** 8.40am - 3.10pm

(a range of extra-curricular activities available Mon-Thu until 4 pm)

### School Details

Age Range	Specialism	Open Evening	Where is uniform available from?	Does the school maintain a waiting list after the first term
11-18	C of E	Y6 – 30 Sept Y12 – 07 Oct	Morley's	Yes

### Accessibility

Disabled Parking	Basic Wheelchair Access into Main School Building	Basic Wheelchair Access into all Buildings on site	Disabled Toilet	Hygiene Room inc changing bed/shower
Yes	Yes	Yes	Yes	Yes - shower

### Year 7 Intake Offers

Intake	Admissions Limit	Number of Applications	Offers	SEN	Cat 1	Cat 2	Cat 3	Cat 4	Cat 5	Cat 6	Allocated	Applications Refused
2023	180	438	180	1	1	0	54	0	49	75	0	60
2024	180	455	180	1	1	1	108	0	35	34	0	87
2025	180	477	180	0	1	4	124	0	30	191	0	80

### Over-Subscription Criteria

When the school is oversubscribed, after the admission of pupils with an Education, Health and Care plan naming the school, priority for admission will be given to those children who meet the criteria set out below, in priority order:

1. Looked after children and children who were previously looked after but immediately after being looked after became subject to adoption, a child arrangements order, or special guardianship order. A looked after child is a child who is (a) in the care of a local authority, or (b) being provided with accommodation by a local authority in the exercise of their social services functions (see the definition in Section 22 (1) of the Children Act 1989).
2. Priority will next be given to children based on their exceptional medical or social needs. Each application must include evidence, from a medical specialist or social worker of the child's need and why they must attend this school rather than any other, based on those needs.
3. Children eligible for the pupil premium. Evidence of eligibility will need to be submitted with the application.
4. Priority will next be given to the children of staff who have been recruited to fill a skill-shortage area.

5. Siblings of pupils attending the school at the time the application is received. 'Sibling' means a natural brother or sister, a half brother or sister, a legally adopted brother or sister or half brother or sister, a stepbrother or sister, or other child living in the same household who, in any of these cases, will be living with them at the same address at the date of their entry to the school.
6. Anyone else requesting a place.

Tie-breaker: If in categories 2-6 a tie-break is necessary to determine which child is admitted, the child living closest to the school will be given priority for admission. Distance is measured using the local authority Geographic Information System known as GIS (\*) to identify and measure the distance from the address point of an applicant's home to the address point of Derby Cathedral School.

Random allocation undertaken by a person of good standing with no association with the Trust or the school will be used as a tie-break in categories 2-6 above to decide who has highest priority for admission if the distance between a child's home and Derby Cathedral School is equidistant in any two or more cases.

Random allocation will not be applied to multiple birth siblings (twins and triplets etc) from the same family tied for the final place.

**Admission Limit: 180**

**Furthest distance offered: 0.638 miles**

# UTC Derby Pride Park

## University Technical College

Locomotive Way, Pride Park, Derby, DE24 8PU **Telephone:** 01332 477400

**Principal:** Mr Lee Kirkwood **CEO:** Mr Nick Crew, Executive Principal **Session times:** Mondays & Fridays 8.30am - 2.35pm, Tuesdays, Wednesdays and Thursdays 8.30am – 3.30pm (Enrichment activities available until 4.20pm)

Age Range	Specialism	Open Evening	Where is Uniform available from?
13-19	Engineering and Health Life Science	Please see our website for dates <a href="http://www.utcderby.org.uk">www.utcderby.org.uk</a>	<a href="#">Academy School Uniforms</a>

### Over-Subscription Criteria

Where the UTC Derby Pride Park is oversubscribed; if the number of applications is greater than the Published Admissions Number, the following criteria in rank order will be used to allocate places:

- I. Any Looked After Children (LAC) in the care of a local authority and previously Looked After Children who wish to attend the UTC, will first be admitted regardless of where they are resident.
- II. Remaining places will be allocated randomly within the geographical bandings indicated on the map in Appendix I of the Admissions Policy, as follows:
  1. 50% of learners resident using the home address within 5 miles of the UTC site, within in catchment band A as indicated in Appendix I of the Admissions Policy.
  2. 30% of learners resident using the home address 5 miles but less than 10 miles from the UTC site, within the catchment band B as indicated in Appendix I of the Admissions Policy.
  3. 20% of learners resident using the home address the Catchment Area 10 miles and over away from the UTC site.
  4. If there are fewer applications received for any band than the stated % the remaining places will be allocated proportionately across the other 2 geographical bands.

This process will be independently overseen. The home address is the address of the primary carer of the child, as shown by who receives the child benefit. The distance will be measured in a straight line from the applicants' front door to the UTC's front gate.

### Admission Limit: 100

\*Apply directly to the UTC for a Year 9 place in September 2026.

[www.utcderby.org.uk](http://www.utcderby.org.uk)

# Derby Moor Academy

Moorway Lane, Littleover, Derby DE23 2FS **Telephone:** 01332 772706

**Principal:** Mr Doyle **Session times:** 8.35am - 3.05pm (Mon, Tue, Thu, Fri), 8.35am - 2.45pm (Wed)

## School Details

Age Range	Specialism	Open Evening	Where is uniform available from?	Does the school maintain a waiting list after the first term
11-19	None	Contact the School	Morleys or Uniform Direct	The Council will maintain the waiting list for this school

## Accessibility

Disabled Parking	Basic Wheelchair Access into Main School Building	Basic Wheelchair Access into all Buildings on site	Disabled Toilet	Hygiene Room inc changing bed/shower
Yes	Yes	Yes	Yes	Yes

## Year 7 Intake Offers

Intake	Admissions Limit	Number of applications	Offers	SEN	Children Looked after	Catchment area Sibling	Catchment Area	Out of Area Sibling	Out of area	Allocated	Applications refused	Appeals lodged	Appeals allowed
2023	300	713	300	6	1	62	126	38	67	0	126	51	2
2024	300	684	300	8	2	55	97	47	91	0	75	32	1
2025	300	736	300	0	1	48	96	39	116	0	71	24	0

## Over-Subscription Criteria

When the school is oversubscribed, after the admission of pupils with Statements of Special Educational Needs where the school is named in the Statement, priority for admission will be given to those children who meet the criteria set out below, in order:

1. A 'looked after child' or a child who was previously looked after but immediately after being looked after became subject to an adoption, residence, or special guardianship order 67. A looked after child is a child who is (a) in the care of a local authority, or (b) being provided with accommodation by a local authority in the exercise of their social services functions (see the definition in section 22(1) of the Children Act 1989).
2. Children who are both living in the Normal Area or Catchment Area served by the school and have siblings (brothers or sisters) of compulsory school age still attending the school at the time of their admission.
3. Other children living in the normal area at the time of admission.
4. Children who do not live in the Normal Area served by the school but who have siblings (brothers or sisters) of compulsory school age attending the school at the time of their admission.
5. Other children whose parents have requested a place.
6. Children whose parents did not request a place by the Local Authority deadline for completion of the Common Application Form.

The term sibling includes brothers and sisters, foster brothers and sisters, half brothers and sisters and step brothers or sisters living at the same address and as a family unit.

Note: A brother or sister must be living at the same address. Cousins are not classed as brothers or sisters.

Note: The 'home address' is defined as the address of the adult with parental responsibility with whom the child normally lives and which applies at the time of application.

**Admission Limit: 300**

**Furthest distance offered: 1.587 miles**



# Landau Forte College

## Academy

Fox Street, Derby DE1 2LF Telephone: 01332 204040

Principal: Ms Brannick Session times: 8.30am - 3.15pm

Year 6 Open evening - Wednesday 13 September Year 12 Open evening - Wednesday 11 October

### Year 7 Intake Offers

Intake	Admissions Limit	Number of Applications	Offers	SEN *	Looked After Children *	Siblings *	Random Allocation *	Applications Refused
2023	203	1150	204					400
2024	196	1041	196					355
2025	203	1217	203					376

\* Please contact the school

### Accessibility

Disabled Parking	Basic Wheelchair Access into Main School Building	Basic Wheelchair Access into all Buildings on site	Disabled Toilet	Hygiene Room inc changing bed/shower
Yes	Yes	Yes	Yes	Yes

The Academy will consider all applications for places. Where fewer than 196 applications are received, the Academy will offer places to all those who have applied. Procedures where the Academy is oversubscribed Where the number of applications for admission is greater than the published admissions number, applications will be considered against the criteria set out below. Places will be allocated in accordance with the principles of Fair Banding. Catchment Areas: For entry at age eleven, 98 places will be offered to applicants from the defined Catchment Area 1, which is the electoral wards of Abbey, Derwent, Arboretum, Normanton and Sinfin.

98 places will be offered to the applicants from the defined Catchment Area 2, which is an encircled geographical area measuring 4.75 miles in radius from the Centre of the College and includes all of the remaining 12 electoral wards of the City of Derby but excludes Catchment Area 1. If insufficient applications are received from either Catchment Area 1 or Catchment Area 2, the places not allocated to applicants from a particular catchment area will be offered to applicants from the other catchment area. Applicants from outside the 2 catchment areas will only be offered a place if there are insufficient applicants from catchment 1 and 2.

### Over-Subscription Criteria

- Looked After Children or children who were previously looked after but immediately after being looked after became subject to an adoption, residence, or special guardianship order 67.
- Children who have a Statement of Special Educational Need or Education Health Care Plan and where the Academy is named.
- Siblings of an existing student who will be in Years 8/11 in the academic year of 2023/24 at the time admission will be given preference provided that the applicant at the time lives in the defined Catchment Area 1 or defined Catchment Area 2 (without prejudice to the conditions set out above Siblings are defined as brothers or sisters who are either (i) a blood relative or (ii) are a sibling by legal adoption. Please note, the sibling criteria is not applicable when the sibling will be in Yr12/13 in the academic year of 2026/27.
- Children attending Landau Forte College Moorhead, who were on their roll at the closing date for secondary school applications – i.e. 31 October.
- Thereafter places will be allocated on a random basis within each stratum of ability. There will be a maximum of 50% in total of students from each of the defined catchment areas subject to sufficient applications being received.

- Should places still be available following allocation of places in Catchment areas 1 and 2 these will be allocated on a random basis.

### Operation of waiting lists

Subject to any provisions regarding waiting lists in the LA's co-ordinated admission scheme, the Academy will operate a waiting list. Where in any year the College receives more applications for places than there are places available, a waiting list will operate until a month after the admission date. This will be maintained by the Academy, and it will be open to any parent/carer to ask for his or her child's name to be placed on the waiting list, following an unsuccessful application.

A child's position on the waiting list will be determined solely in accordance with the oversubscription criteria set out in the paragraphs G. Oversubscription Criteria a - e. Where places become vacant, they will be allocated to children on the waiting list in accordance with the oversubscription criteria.

**Admission Limit: 203**

**Furthest distance offered: 4.828 miles**

# Lees Brook Academy

## Enhanced Resources

Morley Road, Chaddesden, Derby DE21 4QX **Telephone:** 01332 671723

**Headteacher:** Mrs Watson **Session times:** 8.40am - 3.00pm (Thurs 8.40am - 2.00pm)

### School Details

Age Range	Specialism	Open Evening	Where is uniform available from?	Does the school maintain a waiting list after the first term
11-18	None	Thursday 23 September	Morley's	The Council will maintain the waiting list for this school

### Accessibility

Disabled Parking	Basic Wheelchair Access into Main School Building	Basic Wheelchair Access into all Buildings on site	Disabled Toilet	Hygiene Room inc changing bed/shower
Yes	Yes	Yes	Yes	Shower only

### Year 7 Intake Offers

Intake	Admissions Limit	Number of Applications	Offers	SEN	Looked After Children	Catchment Area Sibling	Catchment Area	Out of Area Sibling	Out of Area	Allocated	Applications Refused
2023	219	346	192	0	1	38	76	15	62	26	0
2024	219	345	208	2	1	21	91	18	66	8	0
2025	219	374	195	4	0	28	73	12	69	9	0

### Over-Subscription Criteria

Where applications exceed the number of places available in the appropriate year group (after the admission of pupils with Statements of Special Educational Needs where Lees Brook is named in the Statement), the following criteria are applied by the Governing Body in the order set out below:

1. Children who are looked after (in the care of or accommodated by Derby City Council or another local authority).
2. Children who are both living in the catchment area served by the school and have brothers or sisters still attending the school at the time of their admission.
3. Other children living in the catchment area at the time of admission.
4. Children who do not live in the catchment area served by the school but who have brothers or sisters attending the school at the time of their admission.
5. Other children whose parents have stated Lees Brook Community School as a preference on the common application form.
6. Children whose parents stated Lees Brook Academy as a preference on the common application form but did not return the form to Derby City Education Authority by the closing date.

In categories 2 to 5, when choices have to be made between children satisfying the same criteria, children living nearest to the school, measured by a straight line between their residence and the school, have priority. In category 6, places will be allocated in the same order of priority as for categories 2 to 5. Where children in category 6 have equal priority, places will be allocated to those living nearest to the school, measured by a straight line between the home address and the school.

**Admission Limit: 219**

**Furthest distance offered: 7.088 miles**

# Littleover Community School

Pastures Hill, Littleover, Derby DE23 4BZ Telephone: 01332 513219

Headteacher: Mrs Johnson Session times: 8.40am - 3.00pm

## School Details

Age Range	Specialism	Open Evening	Where is uniform available from?	Does the school maintain a waiting list after the first term
11-18	Science Language	Thursday 09 October	Morley's, Uniform Direct, Uniformity	The Council will maintain the waiting list for this school

## Accessibility

Disabled Parking	Basic Wheelchair Access into Main School Building	Basic Wheelchair Access into all Buildings on site	Disabled Toilet	Hygiene Room inc changing bed/shower
Yes	Yes – sloping site issues	No – very difficult between buildings and no lift to many classrooms	Yes	No

## Year 7 Intake Offers

Intake	Admissions Limit	Number of applications	Offers	SEN	Children Looked after	Catchment area Sibling	Catchment Area	Out of Area Sibling	Out of area	Allocated	Applications refused	Appeals lodged	Appeals allowed
2023	295	994	295	1	4	93	164	22	11	0	268	50	3
2024	295	911	296	8	6	80	148	26	28	0	188	32	1
2025	295	1004	295	0	0	96	153	17	29	0	193	27	0

## Over-Subscription Criteria

If the school is oversubscribed, after the admission of pupils with a statement of Special Educational Need, or an Education Health and Care Plan (EHC) where the school is named in the Statement or EH&C plan, priority for admission will be given to those children who meet the criteria set out below, in order:

1. A 'looked after child' or a child who was previously looked after but immediately after being looked after became subject to an adoption, residence, or special guardianship order. A looked after child is a child who is (a) in the care of a local authority or being provided with accommodation by a local authority in the exercise of their social services functions (see the definition in section 22(1) of the Children Act (1989).
2. Children who are both living in the catchment area served by the school and have brothers or sisters of compulsory school age still attending the school at the time of their admission.
3. Other children living in the catchment.
4. Children who do not live in the catchment area served by the school but who have brothers or sisters of compulsory school age attending the school at the time of their admission.
5. Other children whose parents have requested a place.
6. Children whose parents did not request a place by the closing date 31 October 2025.

For the purposes of admissions, we class a brother or sister as having one or both natural parents in common are related by a parent's marriage are adopted or fostered.

Tie-breaker: When choices have to be made between children satisfying the same criteria, children living nearest to the school measured by a straight line have priority. The line will be measured from the centre of the home address to the school using the national Ordnance Survey set points. If two measurements are the same, we will give priority to the child living nearest the school measured by the shortest walking route from the home address to the school's main entrance. The 'home address' is the address of the primary carer of the child, as shown by who receives the Child Benefit.

Note: the 'home address' is the address of the primary carer of the child, as shown by who receives the Child Benefit.

Admission Limit: **295**

Furthest distance offered: **0.911 miles**

# Murray Park School

## Foundation school

Murray Road, Mickleover, Derby DE3 9LL **Telephone:** 01332 515921 **Headteacher:** Mrs Caley **Session times:** 8.30am - 3.00pm

### School Details

Age Range	Specialism	Open Evening	Where is uniform available from?	Does the school maintain a waiting list after the first term
11-16	None	Thursday 18 Sept	Morley's School Outfitters, Chaddesden, Uniform Direct and Uniformity	Yes

### Accessibility

Disabled Parking	Basic Wheelchair Access into Main School Building	Basic Wheelchair Access into all Buildings on site	Disabled Toilet	Hygiene Room inc changing bed/shower
Yes	Yes - several first-floor classrooms, with some not having lift access	Yes	Yes	No

### Year 7 Intake Offers

Intake	Admissions Limit	Number of applications	Offers	SEN	Children Looked after	Catchment area Sibling	Catchment Area	Out of Area Sibling	Out of area	Allocated	Applications refused	Appeals lodged	Appeals allowed
2023	280	403	262	4	4	42	142	24	46	18	0	1	0
2024	280	396	274	8	0	NA	178	27	58	3	0	0	0
2025	280	451	280	2	1	NA	182	23	64	8	0	1	0

### Over-Subscription Criteria

If the number of applications exceeds the number of places, then the following criteria will apply, in order of importance:

1. A 'looked after child' or a child who was previously looked after but immediately after being looked after became subject to an adoption, residence, or special guardianship order 67. A looked after child is a child who is (a) in the care of a local authority, or (b) being provided with accommodation by a local authority in the exercise of their social services functions (see the definition in section 22(1) of the Children Act 1989) or c) in state care outside of England and have ceased being in state care as a result of being adopted, also received the same highest priority for admission into a school in England.
2. Those living in the defined "normal catchment" area (map available).
3. Siblings of those students who will be attending the school at the date of admission – in order of proximity. Where a family moves after the closing date, we will assess applications from the address the parents are living at on the closing date and will reassess applications on the national offer date.
4. Proximity to the school.

In cases of a tiebreaker for applications of equal strength, preference will be given to the applicant with the shorter proximity to the school measured by the shortest available route from the home to the main school entrance. The route will be measured by straight lines using the National Ordnance Survey set points.

Siblings are defined as brothers and sisters who are either a blood relative or are a sibling by legal adoption or fostering. Brothers and sisters must be living at the same address.

PAN of 280: "additional accommodation has been provided at the school with a view to increasing the PAN up to a maximum of 330. Pupil numbers and projections will continue to be monitored and reviewed, liaising closely with the school over the phasing of the opening of places".

**Admission Limit: 280**

**Furthest distance offered: 5.838**

# Noel-Baker Academy

Bracknell Drive, Alvaston, Derby DE24 0BR **Telephone:** 01332 572026

**Headteacher:** Mr P Greenhough **Session times:** 8.30am - 3.05pm

## School Details

Age Range	Specialism	Open Evening	Where is uniform available from?	Does the school maintain a waiting list after the first term
11-16	None	Thurs 25 September	Uniform Direct, Babington Lane, Derby, DE1 1 SX	Yes

## Accessibility

Disabled Parking	Basic Wheelchair into Main Building	Access School	Basic Wheelchair Access into all Buildings on site	Disabled Toilet	Hygiene Room inc changing bed/shower
Yes	Yes		Yes	Yes	No

## Year 7 Intake Offers

Intake	Admissions Limit	Number of applications	Offers	SEN	Children Looked after	Catchment area Sibling	Catchment Area	Out of Area Sibling	Out of area	Allocated	Applications refused	Appeals lodged	Appeals allowed
2023	280	420	280	1	0	46	154	26	53	0	42	16	0
2024	280	442	284	8	3	56	148	26	43	0	46	23	3
2025	280	422	280	2	1	54	145	26	52	0	15	1	0

## Over-Subscription Criteria

If an application is received for a child outside of the normal admission round first priority will be given within categories 1 – 7 to pupils who have not been on a city roll during the Academic year of application, and must meet one of the following criteria:

1. Looked after children or children who were previously looked after but immediately after being looked after became subject to an adoption, residence, or special guardianship order. A looked after child is a child who is (a) in the care of a local authority or being provided with accommodation by a local authority in the exercise of their social services functions (see the definition in section 22(1) of the Children Act 1989).
2. Places will then be allocated to students who are subject to pupil premium funding who, at the closing date for applications, are residents within the relevant catchment area.
3. Students who are residents within the relevant catchment area, whose parents have requested a place at the academy and who, at the time of admission, will have a sibling\* attending the academy.
4. Other students who are resident within the catchment area and whose parents have requested a place at the academy.
5. Students who are resident outside the catchment area, whose parents have requested a place at the academy and who, at the time of admission, will have a sibling\* attending the academy.
6. Other students who are resident outside the catchment area of the academy, whose parents have requested a place at the academy.
7. Children whose parents did not request a place before the Derby City deadline date.

\*Siblings are considered to be those children who live at the same address and

- have one or both natural parents in common
- are related by a parent's marriage
- are adopted or fostered.

For the purpose of admissions, cousins are not classed as siblings.

In categories 1 – 6, when choices have to be made between children satisfying the same criteria, places will be offered to children living nearest to the Academy, measured by a straight line. The line will be measured from the centre of the home address to the Academy using the National Ordnance Survey set points. In category 6, places will be allocated in the order of priority of categories 1 – 5.

**Admission Limit: 280**

**Furthest distance offered: 3.155 miles**



# St Benedict - A Catholic Voluntary Academy

## Enhanced Resources

Duffield Road, Darley Abbey, Derby DE22 1JD Telephone: 01332 557032 Headteacher:

Mrs Boyce Session times: 8.40am - 3.00pm

### School Details

Age Range	Specialism	Open Evening	Where is uniform available from?	Does the school maintain a waiting list after the first term
11-18	None	Thurs 25 Sept	Morley's and Uniform Direct	Yes

### Accessibility

Disabled Parking	Basic Wheelchair Access into Main Building	Basic Wheelchair Access into all Buildings on site	Disabled Toilet	Hygiene Room inc changing bed/shower
Yes	Yes	Yes	Yes	Yes

### Year 7 Intake Offers

Intake	Admissions Limit	Number of Applications	Offers	SEN	Cat 1	Cat 2	Cat 3	Cat 4	Cat 5	Cat 6	Cat 7	Cat 8	Allocated	Applications Refused
2023	335	497	266	6	0	104	1	4	39	21	90	NA	0	2
2024	335	510	313	3	0	86	2	4	47	10	112	NA	46	0
2025	245	542	245	0	1	76	1	8	52	23	100	NA	0	64

### Over-Subscription Criteria

Where schools have more applications than places available, the school's local governing body will draw up a ranked list based on the criteria listed below and will allocate places accordingly.

Pupils with an Educational Health and Care Plan (EHCP) which names the school will be admitted. This will reduce the number of places available.

1. Catholic children who are 'looked after' or who were 'previously looked after'. A baptism certificate or other proof of baptism is required.
2. Catholic children.
3. Other children who are 'looked after' or who were 'previously looked after'.
4. Catechumens, Candidates, and members of Eastern Christian Churches.
5. Children of other Christian denominations whose membership is evidenced by a minister of religion.
6. Children of other faiths whose membership is evidenced by a religious leader.
7. Any other children.

### Discriminators

First priority within the individual criteria will be given to applications from children who attend one of the partner primary schools.

Second priority within the individual criteria will be given to applications for children who

will have siblings attending the school in years 7-11 at the proposed time of admission.

In the event of oversubscription within any criterion allocation of places will be decided on distance measurement (See below).

### Distance measurement

Distance measurements will be taken in a straight line from the entrance to the child's home to the principal entrance to the main administrative building of the school. This will be calculated by using the school or relevant Local Authority's computerised distance measuring software. In the event of needing to discriminate between pupils living in the same block of flats, where the same distance measurement is produced, the lowest number of the flat the closer it will be judged to be to the school.

### Definition of Sibling

'Siblings' means a child who lives as a brother or sister in the same house, including natural brothers or sisters with either one or both parents in common, adopted brothers or sisters, stepbrothers or sisters, foster brothers or sisters, or the child of a parent's partner where the child for whom the school place is sought is living in the same family unit at the same address as that sibling. It also includes natural brothers or sisters where the child for whom the school place is sought is not living in the same family unit as the same address as that sibling.

**Admission Limit: 245**

**Furthest distance offered: 8.478 miles**

# West Park School

## Academy

West Road, Spondon, Derby DE21 7BT **Telephone:** 01332 662337 **Headteacher:** Mr McGregor

**Session times:** 8.30am - 3.00pm

## School Details

Age Range	Specialism	Open Evening	Where is uniform available from?	Does the school maintain a waiting list after the first term
11-16	Maths and Computing	Monday 22 September	Morley's - Chaddesden	No

## Accessibility

Disabled Parking	Basic Wheelchair Access into Main Building	Access School	Basic Wheelchair Access into all Buildings on site	Disabled Toilet	Hygiene Room inc changing bed/shower
Yes	Yes		No – sloping site	Yes	No

## Year 7 Intake Offers

Intake	Admissions Limit	Number of applications	Offers	SEN	Children Looked after	Catchment area Sibling	Catchment Area	Out of Area Sibling	Out of area	Allocated	Applications refused	Appeals lodged	Appeals allowed
2023	290	514	290	4	3	NA	282	1	0	0	85	NA	NA
2024	290	478	296	17	7	NA	232	5	35	0	43	NA	NA
2025	290	488	290	1	2	NA	250	11	26	0	46	NA	NA

## Over-Subscription Criteria

When the school is oversubscribed, after the admission of pupils with an Educational Health Care Plan (EHCP) where the school is named in the EHCP, priority for admission will be given to those children who meet the criteria set out below, in order:

1. Children who are looked after or a child who was previously looked after and immediately after being looked after became subject to an adoption, residence or special guardianship order\*.
2. Those children residing in the normal area served by the school who have stated West Park as their preferred secondary school through the Common Application Form by the national closing date and who reside in the normal area at the national offer date and at the time of their admission.
3. Those with a sibling currently attending the school.
4. Children of all staff employed by the school where the member of staff has been employed at the school for two or more years at the time at which the application for admission to the school is made or the member of staff is recruited to fill a vacant post for which there is a demonstrable skill shortage.
5. When Governors consider that there are medical grounds for admitting the pupil supported by a doctor's certificate.
6. Other children whose parents have requested a place.
7. Children whose parents did not request a place by the national closing date.

In categories 1 to 6, when choices have to be made between children satisfying the same criteria, we will give priority to the child living nearest the school, measured by a straight line. The line will be measured from the home address to the school using the National Ordnance Survey set points. For category 7, we will allocate places in the same order of priority as for categories 1 to 6.

Where children in category 7 have the same priority, we will allocate places to those living nearest the school, measured by a straight line. The line will be measured from the home address to the school using the National Ordnance Survey set points.

\*A looked after child is a child who is (a) in the care of a local authority or (b) being provided with accommodation by a local authority in the exercise of their social services functions (see the definition in section 22(1) of the Children Act 1989). This includes children who have previously been in state care outside of England and have ceased to be in state care as a result of being adopted.

**Admission Limit: 290**

**Furthest distance offered: 1.752 miles**

We can give you this information in any other way, style or language that will help you access it. Please contact us on **01332 643722** mobile **07812301144** or [BSL Signing Service](#)

## Punjabi

ਇਹ ਜਾਣਕਾਰੀ ਅਸੀਂ ਤੁਹਾਨੂੰ ਿੱਕਸੇ ਵੀ ਹੋਰ ਤਰੀਕੇ ਨਾਲ, ਿੱਕਸੇ ਵੀ ਹੋਰ ਰ ਪ ਜਾ ਬੋਲੀ ਿ ਵੱਢ ਦੇ ਸਕਦੇ ਹ ਾਂ, ਿ ਜਹੜੀ ਇਸ ਤੱਕ ਪਹੁੰਚ ਕਰਨ ਿ ਵੱਢ ਤ ਹ ਡੀ ਸਹ ਇਤ ਕਰ ਸਕਦੀ ਹੋਵੇ। ਿ ਕਰਪ ਕਰਕੇ ਸ ਡੇ ਨ ਲ ਇਥੋਂ ੇ ਸੁੰਪਰਕ ਕਰੋ: **01332 643722** Mobile **07812301144** ਜ ਾਂ [BSL Signing Service](#)

## Polish

Aby ułatwić Państwu dostęp do tych informacji, możemy je Państwu przekazać w innym formacie, stylu lub języku. Prosimy o kontakt: **01332 643722** Mobile **07812301144** lub [BSL Signing Service](#)

## Slovak

Túto informáciu vám môžeme poskytnúť iným spôsobom, štýlom alebo v inom jazyku, ktorý vám pomôže k jej sprístupneniu. Prosím, kontaktujte nás na tel. č.: **01332 643722** mobile **07812301144** alebo na stránke [BSL Signing Service](#)

## Urdu

یہ معلومات ہم آپ کو کسی دیگر ایسے طریقے، انداز اور زبان میں مہیا کر سکتے ہیں  
Mobile **07812301144** **01332** جو اس تک رسائی میں آپ کی مدد کرے۔ براہ  
کرم پر ہم سے رابطہ کریں [BSL Signing Service](#) یا **643277**



Derby City Council

Derby City Council

The Council House Corporation Street Derby DE1 2FS [www.derby.gov.uk](http://www.derby.gov.uk)