



Best Start in Life Plan



Funded by
UK Government



LIVING MY
BEST LIFE

Vision

In Derby, we believe that:

Every child deserves the best possible start in life and the support that enables them to live their best life.

We listen to parents' children and young people and use their voice to shape our services.

We aim for children to be physically and emotionally healthy, safe from harm and supported towards independent adulthood with active involvement in decisions effecting their lives.

Our Family Hubs ethos co-produced with our families is “stronger families through support and friendship” and our plan has clear aims, principles, priorities and outcomes intended to support service delivery through partnership working.

As a partnership there is a shared local passion for improving access to services for babies' children and their families and ensuring appropriate support is received in a timely way.

We know that the early months and years of a child's life are a unique window of opportunity and in Derby we want to be sure that we offer every opportunity possible to ensure children get the best they deserve.

“The foundations for virtually every aspect of human development - physical, intellectual and emotional - are laid in early childhood”

Michael Marmot, 2010



Aim

The aim of the Derby Best Start in Life Plan is the implementation of the Government Policy Document “**Giving Every Child the Best Start in Life**”

Building on the work already completed as part of our Family Hubs programme the plan will:

- Deliver accessible, integrated maternity and family support services across the local area
- Deliver high quality early education and childcare
- Focus on the health and wellbeing of children and families
- Deliver a Best Start Family Hub offer to all families in the city
- Ensure inclusion and early identification and support for children and families

Local Picture

Derby City ranks amongst the most deprived Local authorities in England with many wards falling into the top **20%** most deprived nationally. Subsequently we were one of **75** Local Authorities to receive Family Hub and Start for Life funding in 2022. All six Family Hubs are in our super output areas as are our remaining Children’s Centres which are part of our Family Hub network.

Three main NHS Trusts serve the population of Derby City and Southern Derbyshire including acute hospital services, mental health and specialist community services - Derbyshire Community Healthcare Services (DCHS), Derbyshire Healthcare NHS Foundation Trust (DHCFT) and the University Hospitals of Derby and Burton NHS Foundation Trust (UHDBT).

At the time of publishing the Best Start in Life Plan, there are **104** childminders, **57** Day Nurseries and independent schools, **14** pre-school playgroups, **52** Maintained Nursery Schools and classes. This is a total of **227 providers** of childcare and early education.

There are **112** schools in Derby; **16** secondary, **75** primary and **13** special schools.

Partnership - Working together

Alongside our key partners; Health (0-19's), Specialist Perinatal Mental Health services, Midwifery and the community and voluntary sector, we have delivered successfully a range of services to families 0-19 in Family Hubs. We align ourselves well with our Learning Inclusion and Skills division within the Local Authority ensuring the needs of our most vulnerable groups are met, this includes SEND and Inclusion. Care leavers and their children and those at risk of entering the care system are also a priority. We work closely with the Pakistan Community Centre and its families and Cotton Lane family and youth centre who work with Roma/Slovak families.

With an established service we are seeking to further strengthen the alignment with wider system reforms both locally and nationally, this includes:

- **Families First partnership, Plan for Derby** *ensuring that Family Hubs support signposting and delivery of services to families across all neighbourhoods and communities and link into both statutory and non-statutory services*
- **The NHS 10-year plan** *aligning the Best Start / Family Hub agenda with the developing Neighbourhood Health Model, working closely with partners to ensure connectivity joint delivery in a place-based way*

- **Poverty Strategy** a key partner in Derby city's anti-poverty strategy with key deliverables for Family hubs and Early Years partners
- **Local Early Years Strategy** which has 3 clear aims, principles, priorities and outcomes intended to support delivery through our partnership working
- **Early Help Strategy** Family Hubs are integral to both this strategy and the Early Years strategy
- **Local Area Inclusion Plan and Partnership** Key deliverables are ensuring a graduated response, a universal SEND offer including the recently developed Neuro Developmental pathway for under 5's.
- Building on previously funded **Connected Perinatal Research** into more inclusion for fathers and having engagement with Fathers as a priority
- **Children & Young People Mental Health Needs Assessment** which highlights some challenges within the perinatal Mental Health space.
- **Infant Mortality** strengthening work with General Practitioners across the city
- **Maternity Transformation** working closely with the Midwifery service to expand that early offer into Family Hubs and with staff to be available within the hospital both at discharge and in the neonatal unit.



We support a seamless, locality-based system that identifies children early, intervenes proportionately, and wraps support around families without stigma and that ensures the Right support in the Right place and at the Right time. Core to delivery of this plan is the alignment with The Derby Plan, Family Hubs sit within the Resilient city, and our aim is to be visible and aligned. There are over 4000 community and voluntary groups in Derby building on our strong sense of pride and community we are determined to reduce inequalities and improve health & wellbeing across the city unlocking the potential within our communities. This has enabled us to develop a clear plan for delivering those right services in most appropriate spaces.

Key Metrics

Current Picture (taken from NESTA playbook)

Early Years Good Level of Development

Our current 24/25 GLD overall is 64.6% **Target 73.8%**

24/25 GLD FSM is 52.1% **Target 63.6%**

This means that we require **282** additional children to meet our overall target and 95 additional children to meet the Free School Meal target.

Special Educational Needs Inclusion Fund (SENIF) referrals for under 4's supported **709** children in 2023/4. In 2024/25, the fund supported 619 children. Over **80%** of requests are for children needing support relating to either speech and language or communication and social interaction.

Take up of 2-year-old Flying Start **92%**

Take up of 3-year-old free entitlement **96.7%**

Take up of 4-year-old entitlement **100%**

Current take up is good and positions us well to support Family Hubs and settings to improve good levels of development through the offer for both parents and professionals.

Health Data

Presented below is the latest nationally and locally published data which sets the context for the delivery ambitions of this plan.

- **On average, 66%** of vulnerable mothers received an antenatal health review from a Health Visitor in Qtr. 3 2025/26
- **60%** Breastfeeding at 6-8 weeks
- **98.4%** New birth visits face to face were delivered by a Health Visitor within 14 days in Qtr. 3 2025/26
- **99%** of families receive a text message when their baby is 3 months with age related information and sign posting.
- **99%** of families receive a text message when their baby is 6 months with age related information and signposting.
- **96%** of children receive a 12-month child development review from the Health Visiting team (face to face in the home/child health clinic in most cases) in Qtr. 3 2025/26
- **89%** of 2-year-olds receive the first dose of the MMR vaccination however this is below national average
- Families with a child that is not in an early years setting at **3/3.5 years or** where the family has concerns will receive a child development review with a Health Visitor
- **74.1%** of 4–5-year-olds are a healthy weight however we know **12.4%** of children at Reception age are classed as obese.
- **27.3%** of children have dental decay at age 5 and this is much higher than the national average
- **95.3%** of children in Derby received the ASQ-3 as part of the Healthy Child Programme
- This data tells us at the 2 to 2.5 health review **81.9%** were at or above the expected level in all five areas of development.



Family Hub Data

As part of supporting the Best Start in Life through our Family Hub programme there is a summary below of the progress and engagement which provides a strong sustainable foundation for this current plan

Measure	2023/24	2024/25	2025/26	Context
Performance				
Reach figures for Family Hubs	69%	73%	78%	Derby has a reach figure of 15,219 under 5's
Increase in footfall	40,441	47,966	49,250	Footfall has increased by 2.7% in the last 12 months
Average weekly footfall	777	922	947	Average weekly footfall has increased by 21.9% over the last 2 years
Activity parent confidence	N/A	75% - 90%	76% - 93%	Parent confidence has increased when measuring pre and post scores
Year	2023	2024	2025	
HLE				
PEEP	1,497	1,521	1,372	Consistent numbers over the last 3 Years
REAL	N/A	N/A	735	New for 2025
Early Talk Boost	N/A	N/A	N/A	New for 2026
Early Talk Boost Training				In 2025, 30 External Early Years practitioners were trained from 13 different settings, with an additional 3 Train the Trainer courses undertaken.
Tiny Talk	290	923	1,422	Numbers have increase by 54%
Parent Support				
EPEC	N/A	222	315	41.9% increase since 2025

TogetherNESS	N/A	293	466	59.1% increase since 2025
TogetherNESS Online Learning				Derby's Online Course Data - 732 Registered Learners and 522 Actual Learners Online. Derby currently holds 12-month average monthly registered learners per 100,000 (AVML/100k) of 12.59 for the parent/carer licence, placing us 18th out of 83 sponsors.
PEEP Baby Grow	558	2,337	3,384	30.9% increase since 2025
PMH & PIR				
Mother & baby Wellbeing	N/A	N/A	104	New for 2025 – 8 week programme for mothers & birthing parents to connect with their new baby in a relaxing and mindful way.
Baby Massage	583	1,181	1,344	13.8% increase since 2025
Nest, Nurture, Grow Event				25/03/2026 - An event at the Quad, Derby to promote Best Start In Life for local families and promote antenatal services offered across the city. Over 100 families attended
Wider Services				
Stay & play	8,517	6,600	7,219	Consistent numbers over the last 3 Years
Early Support Group	1,069	1,170	1,289	9.2% increase since 2025
Midwifery	1,863	2,926	4,834	65.2% increase since 2025

Early Help and Children's Social Care Data

Our “Right time, Right intervention, Right relationship” approach building on our strengths- based model “Stronger Families Resilient Children” has seen the number of cases both in child protection and child in need reduce. As we move forward with Families First, we are set to continue to develop our Family Help offer and by integrating the Family Hubs offer more closely, families will be able to access both universal and targeted support in a strengths-based way.

Child Protection **221** plans Child in Need **520** plans Early Help assessments **1,248 (March 2026)**

Principles

We have five key principles and areas of work all with relevant activity and programmes to promote and support giving families the Best Start in Life

1. Nurture from the start

We will ensure that partners across the system share correct and consistent key safeguarding messages with families. Working closely with health partners it is our intention to support perspective parents/carers and new parents to access the best service available to them at the earliest possible time. We want families to have access to the best information that enables them to make the right informed decisions when necessary. We know that the access rate in the city to specialist perinatal mental health services is significantly below the national average and that there is work to do to improve this.



The Local Authority and partners will ensure there is up to date information including information on:

- Keeping Babies Safe which includes safer sleep; safe eating; accident prevention including button batteries
- Neglect
- Domestic Abuse
- Use of pushchairs and car seats

Family Hubs continue to deliver a variety of programmes available to all who require them delivered both in Family Hubs and in community venues and the hospital these include:

- Preparation for Parenthood
- Ante-natal PEEP

- Pregnancy weight management and wellbeing
- Mums' bumps and babies
- Bump to babies
- Dad's space with connected perinatal
- Dad Pad
- Keeping Babies Safe strategy
- Togetherness online – antenatal learning pathways

Future work will include taking into account the findings from the local Maternity and Neonatal Community Engagement project ensuring that services for local families, particularly those from Black and Asian communities, and those living in areas of high deprivation who often experience poorer health outcomes - are accessible; taking into account what matters most to them, what's working well and what needs to improve. A detailed Peri-natal and Infant Parent Relationship pathway to ensure there is early engagement to those most vulnerable. To complement our current parenting offer we are exploring the 5 to Thrive model which is an attachment-based approach to positive parenting.

2. Foundations for healthy babies

Early relational health between parents, carers and their babies lay the foundation for a child's social, emotional and cognitive development.

Family Hubs will continue to offer the programmes below:

- Young parents connect
- Baby massage
- Mother and baby Well being
- Buggy walk and talk
- Breastfeeding clubs
- Baby stay and play
- Child Health clinics
- Tiny Talk
- Five to Thrive
- EPEC Baby and Us

The programmes have worked well and our expertise at development of rolling programmes will enable the future planning of investment in the training and development of all staff to be able to promote vaccinations at the earliest possible time, taking learning from the twelve pathfinders that are being established from mid-January 2026 for a 12 month evaluation period to test different operational models.



We will explore training the early years workforce in Making every contact count (MECC) and/or Motivational interviewing techniques (also called brief interventions).

We will ensure we integrate oral health and sugar reduction messaging and provide the following in Family Hubs and community venues:

- Easier access to vaccination services by expanding vaccination services to reach into underserved communities, using evidence of where this has been done successfully to guide the approach.
- Ensure there is good access to wellbeing support within the perinatal and post-natal periods

- Access to evidence-based parenting programmes
- Access to clinics both health and midwifery
- Strengthen links between Family Hubs and community food provision (including allotments, community growing spaces, use of the Resilience and support fund)
- Attendance for children in local childcare provision with access to advice and guidance from the Family Information Service

3. Supporting every step

We are establishing a system that meets the needs of our children at the right time and the right place by putting children first, giving children the best start in life and providing effective developmental support for children with emerging and additional needs. It is our intention to ensure there is more information about child development and training and how children learn and develop both for parents and professionals. This will ensure that assessments done by professionals have good input from families who are helped to be confident in their understanding and ability to support their children at the earliest possible moment.

A multidisciplinary programme is already underway which includes the Family Hub developed Neuro Developmental triaging and pathway, a graduated approach, and workforce development (engaging our special schools alongside the LA's specialist teaching services), targeted reviews of SENIF use and needs; responsive support mechanisms for Early Years and all schools and post 16 to build strategies to meet needs at SEN support and to effectively support children earlier. Current Family Hub work with Royal School for the Deaf is integral along with delivery of Derby signing families.

A review of how deaf and visual impairment teaching services are to be delivered will support moving to enabling individual and group work to support families and fostering peer to peer support.

Additionally, and in line with the White Paper and the SEND reforms, the inclusion and SEND teams, including the Derby City experts at hand service will be focussing not just on team around the child and education setting but will be moving to a team around the community. All Best Start in Life Inclusion Practitioners employed by Family Hubs will be supported and engaged to link into those wider SEND services and will provide advice and support to families and children earlier.

Our current offer of programmes will continue, and these include:

- Healthy me workshops
- Togetherness (Solihull) approach
- EPEC
- Derby signing families
- ASC friendly Drop ins
- Early Support Group (ND pathway)
- Stay and Play

We will further explore online and face to face workshops in schools and hubs on subjects such as Sleep, Diet and ASC/ADHD.

4. Early Years; care and growth

It is important to ensure there is good accurate information shared on Children's safety – e.g. RoSPA, (blind cords, nappy sacks, button batteries, etc), water safety, sun safety and road safety. Online safety support for parents on how to create a safe online home environment



including how to set online filters and blockers recommended screen time and age-appropriate games. Activities currently on offer will continue to link in with the following city and partnership activity which includes:

- Holiday activity funding - Supporting with venues and signposting
- Support to recognise neglect prevention and support for Domestic abuse
- Positive Parenting (Reducing Parental Conflict)
- Access to Resilience Fund and advice on debt benefits and returning to employment.
- Using children's voice and capturing this in a way that informs and co-produces services.

Moving forward we want to focus on independence, for example, this will include children being toilet trained, eating and drinking independently and dressing and undressing themselves. Making best use of the Early Years Portal funded through the Family Hubs to support the sharing of information so that children are school ready at their point of transition.

Continuance of support to access Early years entitlement for eligible 2-year-olds and all 3- and 4-year-olds. Figures in the city are positive, but we need to maintain across the city our tenacity to support families and providers. We will continue to across Health leads, Early Years providers and Family Hubs to maintain and increase take up; Families Information Service is a key partner and driver for this.

5. Become an integral partner within the Early Years Sector and Schools

Strengthening the home learning environment is key to the achievement of the Good Level of Development targets and children reaching their full potential. It requires the collaboration of education, health, VCS and early help and social care professionals. We need clear and consistent messages and information about the distinctive role of each partner in the process. Strong support from our Adult Learning service who support learners at every stage in community venues is a key part of the delivery.

Speech & Language Therapists and Family Hubs provide great early support for families in terms of modelling high quality interactions and communication workshops. This continues throughout a child's time in education settings where it becomes linked to the current curriculum and teaching for every child, parents are helped to support their own child's learning and development in all subjects and areas of development.

Support the delivery of high-quality Early Years provision, access to evidence-based programmes for parents and staff and use of high-quality resources is essential, and the Early Years Strategy supports this.

Key partners will be involved including schools, private voluntary and independent sector and childminders.

Programmes such as Early Talk Boost supports this. Family Hub staff, education and health professionals will work together to offer training to educators, with setting-based educators providing relevant and contextualised learning opportunities for language-rich practice, including sustained shared thinking.

Programmes will include:

- PEEP
- REAL
- EPEC

- LEAP (Lets Play in Tandem)
- Early Years Talk Boost as the City-wide approach to communications through Best Start in Life. Planned roll out in 2026/7 is once per term and for the following 2 years
- ASC ADHD drop ins

Work with Schools

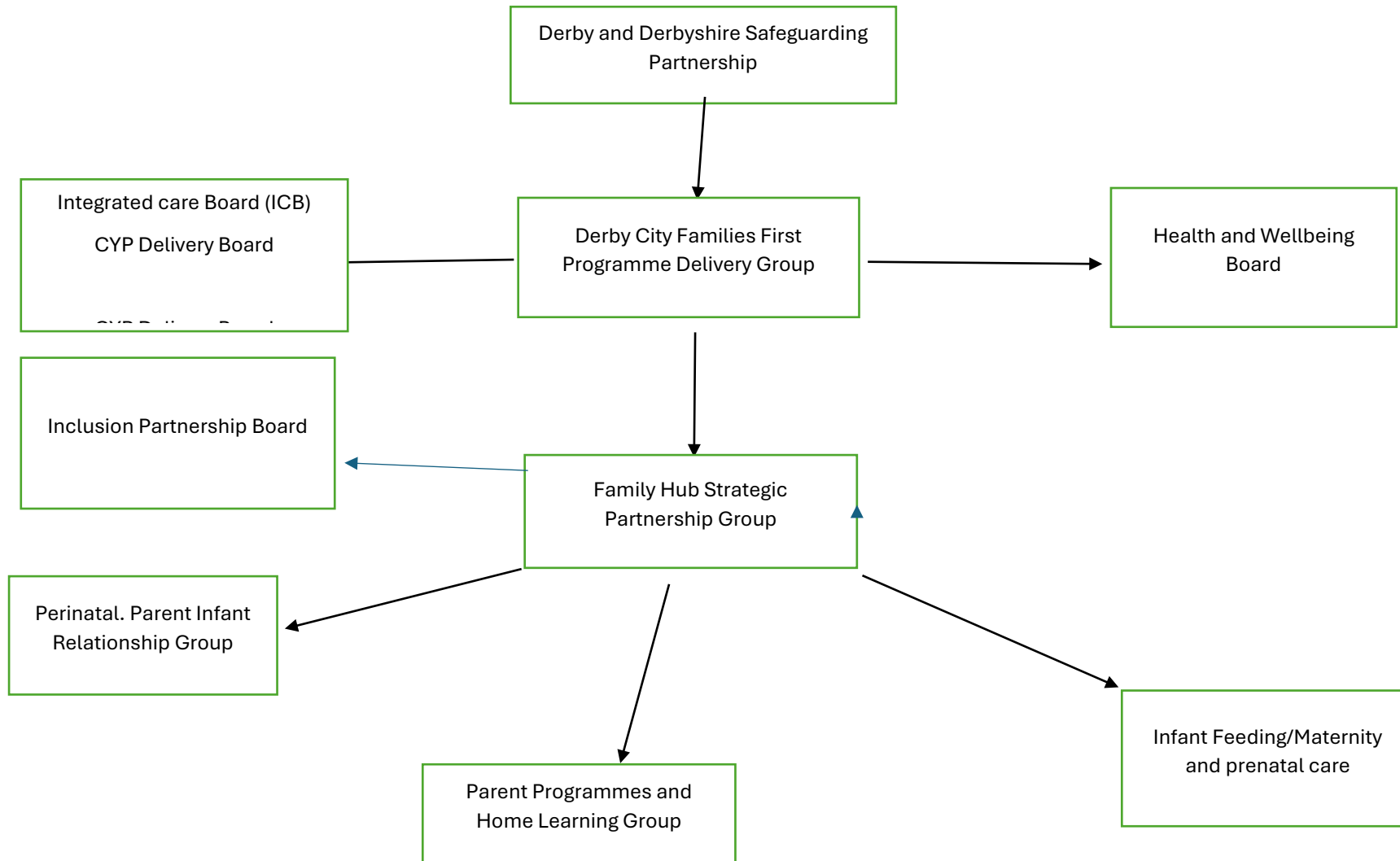
Working to implement the following to ensure a focus of improving outcomes Derby City Learning Inclusion and Skills department has introduced and is working on the following:

- An **Inclusive / Adaptive Curriculum** repository launched which follows on from our Derby Way guidance; We have established communities of practice and cluster groups that have several focus areas including attendance, SEND and Early Years. Transition activity will be established across each phase. Two programmes are being implemented in 2026, one for early years into primary for those young people with poor executive functioning skills and one for primary to secondary for those at risk of poor attendance in secondary and risk of exclusion. Additionally, a new programme for supporting improved transitions for all students is being developed for implementation in 2026/7 academic year.
- Direct intervention through an intensive whole SEND review process followed by interventions in classrooms and at a whole school level is being rolled out across 16 schools including academies and will reach down into Early Learning Goals.
- Piloting intensive support in schools by the LA's Intervention First team and Early Years Improvement team in 4 schools and two provisions.
- Piloting school to school intervention support to improve Quality Education and outcomes led by 2 schools with Good Levels of Development - leading into cluster-based work

- Commissioning school leader- a school leader group for coaching and mentoring
- Undertaking Early Years Foundation Stage moderation across LA maintained schools
- The Tale of Two Cities initiative piloting in 13 pre-school settings – focused on reading, funding to address impact of deprivation in partnership with employers this includes the delivery of Early Talk Boost
- Derby Promise - Dream Fest (all ELGs), Year of Reading
- 2.5-year-old integrated health check - trigger activity under Special Educational Needs Investment Fund



Governance, accountability, commissioning and continuous reflection



Action plan

The plan below is an example of some of the actions taking place across the wider plans for Family Hubs, Early Years and Learning and Inclusion including the PACE (Professional Advocate for Children in Education) Outcomes Plan. It gives an overview of those key actions taking place across services.

Areas of focus	Actions	Lead	Delivery / review deadlines	Measuring impact
----------------	---------	------	-----------------------------	------------------

Nurture from the start - to include ensuring equitable access to services, system wide recognition of the health impact of children's health and wellbeing support parents and carers to know what to expect for mental and physical changes to becoming a parent

Access to good quality services anti- natal for parents and birthing partners	Develop base line and see an increase in the number of parents taking part in anti-natal activity across the partnership	Midwifery Family Hubs	Quarterly review	Increased take up and access to Midwifery and PMH services
Number of PEER support groups available to parents	Increase the number of sessions and engagement in wellbeing groups and sessions	Family Hubs and Connected Perinatal	Quarterly review and part of Family Hub monitoring reports	Increase in numbers and How was it for you?
Delivery of Breast-feeding groups in all communities	Expand the offer of Breast Feeding support across the communities and those seldom reached groups	Family Hubs 0-19 services	Recorded attendance as part of regular statutory monitoring	Good access across the city to facilities and increase in Breastfeeding numbers

Foundations for Healthy Babies - Ensure access at the earliest possible point, proactively connect every family especially those facing significant challenges with tailored, timely support services and promote positive infant parent bonding

Extend the reach of the Keeping Babies Safe offer and sessions	Number of families receiving Keeping Babies Safe visits	Head of EH and Fieldwork Social Care Family Hubs	Quarterly monitoring	Increased visits citywide awareness of safety aspects of KBS Hospital admissions reduction
Ensure a wide offer of both face to face and online evidence-based programmes for Parents and carers	Good engagement of families identified evidence-based programmes	Family Hub Programme Lead	Quarterly monitoring	Number of parents completing Improved GLD scores
Promote positive infant parent bonding, Development of wellbeing space	Engage Families in the Perinatal Pathway for additional support easily accessible	Family Hub Programme Lead Public Health Lead	Monthly reviews via PMH meetings	Greater use of services which are easily accessible for families

Ensure appropriate information and support is available on Vaccination	Ensure in all Family Hubs and network sites that accurate information is available	Family Hub Programme Lead and 0-19 service	Regular review of publicity materials Review of pilot work	Increase in take up
Deliver training on Making every contact count	Plan training across the partnership ensuring balance of professionals available to undertake the training	Family Hub Programme Lead Public Health Lead	12 months delivery	Increase of staff engaging with families

Supporting every step - take a proactive approach to ensuring families are safeguarded at every step and advocate for infant, family and safety needs across the city

Create improved relationships with key partners	New Family hub Triage link with GP's	Family Hub Programme Lead	Quarterly review via groups such as Infant mortality working group Data submissions	Increased registration and use of Hubs
Engagement with perinatal MH services	Creation of a virtual team to support infant parent relationships and perinatal MH	Family Hub Programme Lead	Quarterly reviews of progress for team set up Team in place by October 2026	More access to specialist support
Ensure presence and representation at Early Years strategy group and Providers groups in locality	Improve connection across services and work within the wider childcare community	Family Hub Programme Lead and SRO	Reviewed as part of EY strategy review	More contacts and use of FH by partners progress against GLD

Early Years Care and growth - Support parents to become their child's first educator, strengthen opportunities that highlight the importance of early connections learning through play, support families at the earliest possible moment when they are struggling with their child's needs

Continue to develop Early Support Group to obtain Evidence Based status	Continued development and attendance at ESG and access to ND pathway	Family Hub Manager and School Readiness Lead	Quarterly review EB status achieved in 12-18 months	Children receiving Right service at right time earlier reduction in ND waiting list
Develop the Inclusion practitioner post as part of the wider Family hub team and develop matrix arrangements with Inclusion services	Posts created and established in FH's	Family Hub Programme Lead	In post by September 2026	Number of contacts with parents where SEND is raised

***Becoming an integral Partner within the Early years sector - Provide opportunities to work collaboratively with both childcare providers and schools.
Provide appropriate opportunities to evidence-based programmes for both staff and parents across the workforce***

Plan and deliver a range of evidence-based programmes on offer across the Early Years sector	To improve young children's early speech, language, and communication skills so they enter school with stronger foundations for learning, social interaction, and future attainment. Delivery of ASC and ADHD work shops	Family Hub Programme Lead and Managers	Delivery of Early Talk Boost across PVI, and school settings Quarterly reviews on offer and numbers	Improved GLD achievement Increased awareness and support
Development of cluster based GLD work	To improve school performance and pupil outcomes by enabling schools to work in data-informed clusters, sharing effective practice, offering challenge as critical friends, and strengthening collective capacity across the city.	PACE Officers Early Years Manager	Quarterly Reviews	Increased performance and confidence in delivery improved GLD scores
Introduction of Foundation stage profile assessment	To ensure EYFS assessments are accurate, consistent, and aligned with national standards, strengthening the reliability of data and supporting high-quality early years provision across the city.	Early Years Manager	Quarterly Reviews	Confident consistent delivery of EYFS profile

We can give you this information in any other way, style or language that will help you access it. Please contact us on **01332 640767** or **derby.gov.uk/signing-service**

Punjabi

ਇਹ ਜਾਣਕਾਰੀ ਅਸੀਂ ਤੁਹਾਨੂੰ ਕੋਈ ਵੀ ਹੋਰ ਤਰੀਕੇ ਨਾਲ, ਕੋਈ ਵੀ ਹੋਰ ਰੂਪ ਜਾਂ ਖੋਲ੍ਹੀ ਵੀ ਦੇ ਸਕਦੇ ਹਾਂ, ਜਿਹੜੀ ਇਸ ਤੱਕ ਪਹੁੰਚ ਕਰਨ ਵੀ ਚਤੁਰ ਡੀ ਸਹਾਇਤਾ ਕਰ ਸਕਦੀ ਹੋਵੇ। ਕੰਰਪ ਕਰਕੇ ਸਾਡੇ ਨਾਲ ਇੱਥੇ ਸੰਪਰਕ ਕਰੋ: **01332 640767** ਜਾਂ **derby.gov.uk/signing-service**

Polish

Aby ułatwić Państwu dostęp do tych informacji, możemy je Państwu przekazać w innym formacie, stylu lub języku. Prosimy o kontakt: **01332 640767** lub **derby.gov.uk/signing-service**

Slovak

Túto informáciu vám môžeme poskytnúť iným spôsobom, štýlom alebo v inom jazyku, ktorý vám pomôže k jej sprístupneniu. Prosím, kontaktujte nás na tel. č.: **01332 640767** alebo na stránke **derby.gov.uk/signing-service**

Urdu

یہ معلومات ہم آپ کو کسی دیگر ایسے طریقے، انداز اور زبان میں مہیا کر سکتے ہیں جو اس تک رسائی میں آپ کی مدد کرے۔ براہ کرم **01332 640767** یا **derby.gov.uk/signing-service** پر ہم سے رابطہ کریں



Derby City Council

Derby City Council
The Council House Corporation Street Derby DE1 2FS
www.derby.gov.uk