

Darley Abbey Bridge

HERITAGE STATEMENT & BASELINE UNDERSTANDING

for Derby City Council
Appendix 3 - Photographic Survey

Mel Morris Conservation
67 Brookfields Road
Ipstones
Staffordshire
ST10 2LY

Melanie Lloyd Morris,
Dip. Arch. Cons, IHBC, MRTPI

All photographs are © taken by Mel Morris
Conservation, unless otherwise stated, and to
be reproduced at A3 landscape.

10th October 2025 v.1





1. Right bank abutment from downstream (8.8.25).

2. Right bank abutment - detail of stepped masonry and clay riverbank to downstream corner (8.8.25).



2



3

3. Right bank sandstone abutment (downstream corner) with undercut and pile (8.8.25).

4. Right bank abutment with undercut (approx 1.5 metres undercut) - 8.8.25.



4



5. Stepped masonry abutment to right bank, with channels cut out for beams to top course (8.8.25).

6. Stepped masonry abutment to right bank - upstream bank (8.8.25).



Mel Morris Conservation - Darley Abbey Bridge



7. Left bank and abutment from upstream side (8.8.25).

8. Left bank stepped masonry abutment (8.8.25).





9

9. Pier I - masonry rounded cutwater and short cast-iron posts from upstream (8.8.25).

10. Pier I - blue brick repair to downstream cutwater.



10

11. Cast-iron bell-shaped end cap to Pier I - upstream.



11



12

12. Masonry pier I with stepped construction and cast-iron beam (8.8.25).

13. Masonry pier I - full depth, with detail of superstructure (8.8.25).



13



14. Cast-iron beam with flanges to Pier I (8.8.25).

15. Detail of cast-iron post to Pier I (8.8.25).



16. Detail of upstream cutwater to Pier I (8.8.25).

17. Detail of cast-iron collar (400mm x 400mm).



18. Masonry upper face to Pier I (8.8.25).





19. Detail of masonry to Pier I (8.8.25).

20. View of masonry to Pier I with view of remaining 4 sets of paired piers (8.8.25).



Mel Morris Conservation - Darley Abbey Bridge



21. Detail of masonry to Pier I - rounded cutwater and jointing repair (8.8.25).

22. View of cast-iron end cap - downstream face of Pier I and soffit of rebar and concrete (8.8.25).





23. Cast-iron square collar with inset casting and remains of threaded bolts, with timber in-situ. (8.8.25)

24. Casting to former post (upstream) - 8.8.25.



25. Central cast-iron flange (8.8.25).



26. Pier I - coursed masonry detail (8.8.25)

27. Level of channel between left abutment and Pier I.



28. Cast-iron collar to inset casting (500mm x 500mm)

29. View of cast-iron collar, cramps, and ashlar (8.8.25)





30. Short cast-iron post - Pier 1 (downstream) - 8.8.25.

31. Bell-shaped cast-iron end cap (Pier 2 - upstream).



Mel Morris Conservation - Darley Abbey Bridge



32. Stepped masonry detail - downstream left bank.

33. Tapered end of cast-iron beam, with four holes for dowels, missing end cap (upstream face - Pier 4) - 8.8.25.



34. Casting with 1853 date - downstream (pier 3).

35. Pier 4 - castings, bell-shaped end-cap, and concrete spandrels to bridge, looking from downstream (8.8.25).



36. Casting with 1853 date - upstream (pier 3) - 8.8.25

37. View looking at Pier 3 (8.8.25).





38

38. View of soffit of concrete, concrete beams, and rebar 1934 bridge (between right abutment and Pier 5) - 8.8.25.



41

41. View of concrete soffit and rebar to 1934 bridge (8.8.25).

39. Detail of concrete and rebar to edge beam (8.8.25).

40. Detail of Pier 3 with concrete spandrels (8.8.25).

42. Detail of Pier 4 - downstream with cast-iron end-cap and concrete and rebar spandrels with corrosion (8.8.25).



39



40

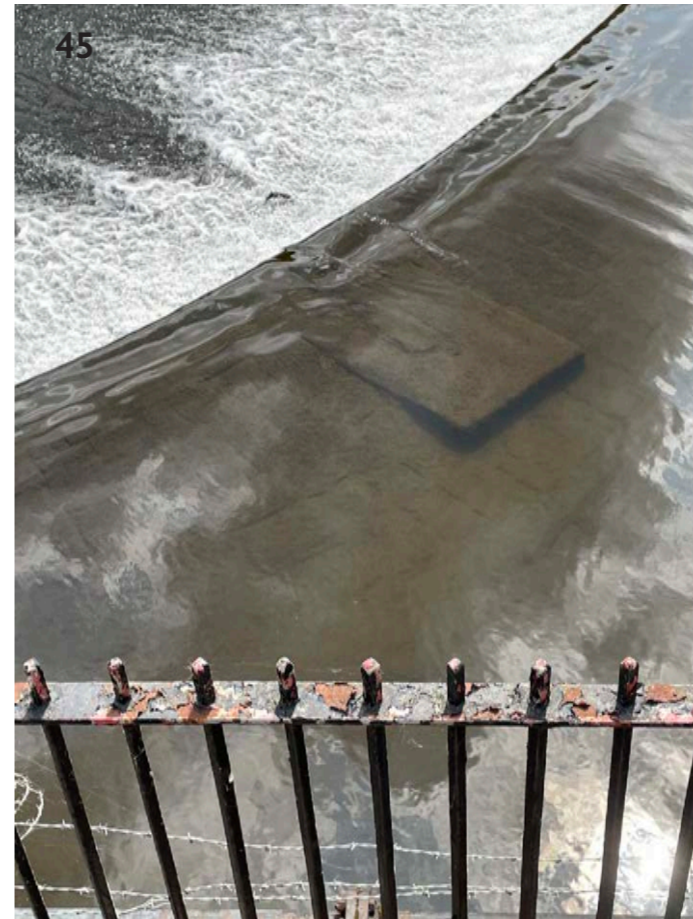


42



43

43. View of the bridge from downstream and the weir (8.8.25).



45

45. View of stone baulks and setted weir crest (14.7.25).



46

46. Former leat to paper mill - right bank (14.7.25).

44. View of the weir from upstream (8.8.25).

47. Weir crest and stone baulk to sharp-crested weir, with stone setts (8.8.25).



44



47



48. View of fish-weir from upstream (8.8.25).



50. Straight-drop south weir - detail of cast flanges for the former sluice gates (8.8.25).

49. View of bridge from paper mill leat and southern part of weir (8.8.25).



Mel Morris Conservation - Darley Abbey Bridge



51. Detail of abutment of south weir and 'island' (8.8.25).



52. Long Mill (east elevation) - 14.7.25.



53. Long Mill (west elevation facing the bridge) with West Mill to the right (14.7.25).